

Local Waste Management Plan of Roskovec Municipality

May 2025

TABLE OF CONTENTS

1	INTRODUCTION	ERROR! BOOKMARK NOT DEFINED.
1.1	The need for the development of a Local Waste Management Plan	Error! Bookmark not defined.
2	NATIONAL POLICY AND LEGAL FRAMEWORK LEGAL AND INSTITUTIONAL ASPECTS IN WASTE MANAGEMENT	ERROR! BOOKMARK NOT DEFINED.
2.	National policies and basic principles of waste management	17
2.1	Institutional aspects of waste management	17
2.1.1	Organization at central level	20
2.1.2	Organization at the local level	20
2.1.3	Instruments for waste management at the local level	21
3	ENTRIES	22
4	PROVISION OF WASTE MANAGEMENT SERVICES IN THE MUNICIPALITY OF ROSKOVEC	ERROR! BOOKMARK NOT DEFINED.
5	DEFINING PERFORMANCE INDICATORS	ERROR! BOOKMARK NOT DEFINED.
6	LOCAL INTEGRATED WASTE MANAGEMENT PLANNING	ERROR! BOOKMARK NOT DEFINED.
6.1	Vision	Error! Bookmark not defined.
6.2	Objectives	Error! Bookmark not defined.
6.2.1	Waste stream, object of the plan	Error! Bookmark not defined.
6.2.2	Waste Management Area (WMA) and cleaning service beneficiaries	Error! Bookmark not defined.
6.3	Waste management services	Error! Bookmark not defined.
6.3.1	Street cleaning services	Error! Bookmark not defined.
6.3.2	Collection, transportation of mixed urban waste	Error! Bookmark not defined.
6.3.3	Waste treatment at the Energy Treatment Plant in Fier	Error! Bookmark not defined.
6.3.4	Waste separation service at source and separate waste treatment, recycling and composting	Error! Bookmark not defined.
6.4	Management of bulky and construction waste	Error! Bookmark not defined.
7	PROPOSED OPTIONS FOR ORGANIZING THE SERVICE	45
7.1	Presentation of waste management service organization scenarios	Error! Bookmark not defined.
7.2	Calculation of service costs for the proposed service organization scenarios	Error! Bookmark not defined.
7.3	Potential economic benefits from the application of source separation schemes	Error! Bookmark not defined.
7.4	Other waste management	Error! Bookmark not defined.

Local Integrated Waste Management Plan of Roskovec Municipality

7.5	Revenue recovery policy and cleaning fee	Error! Bookmark not defined.
7.5.1	Planning of revenues from the cleaning fee according to the proposed scenarios	Error! Bookmark not defined.
8	PLANNING COMMUNITY AWARENESS AND INFORMATION CAMPAIGNS	ERROR! BOOKMARK NOT DEFINED.
9	REVIEW OF THE PLAN	ERROR! BOOKMARK NOT DEFINED.
9.1	Monitoring the plan	Error! Bookmark not defined.
10	INSTITUTIONAL AND LEGAL FRAMEWORK	ERROR! BOOKMARK NOT DEFINED.
10.1	Local regulation	Error! Bookmark not defined.
10.2	Enforcement and sanctions	Error! Bookmark not defined.
11	ACTION PLAN	ERROR! BOOKMARK NOT DEFINED.

Figures & Tables

FIGURE 1 MEETING OF STAKEHOLDERS OF THE LOCAL WASTE MANAGEMENT PLAN IN THE MUNICIPALITY OF ROSKOVEC (21 MARCH 2025)	ERROR! BOOKMARK NOT DEFINED.
FIGURE 3 GEOGRAPHICAL POSITION OF THE MUNICIPALITY OF ROSKOVEC	ERROR! BOOKMARK NOT DEFINED.
FIGURE 4 POPULATION OVER THE LAST 5 YEARS IN THE MUNICIPALITY OF ROSKOVEC 2020-2024	ERROR! BOOKMARK NOT DEFINED.
FIGURE 5 NUMBER OF FAMILIES IN THE MUNICIPALITY OF ROSKOVEC OVER THE LAST 5 YEARS	ERROR! BOOKMARK NOT DEFINED.
FIGURE 6 ORGANIZATION OF THE SUBORDINATE DIRECTORATE IN THE MUNICIPALITY OF ROSKOVEC	ERROR! BOOKMARK NOT DEFINED.
FIGURE 10 WASTE STREAM COMPOSITION CAMPAIGN – AVERAGE PERCENTAGES FOR THE CITY OF ROSKOVEC	ERROR! BOOKMARK NOT DEFINED.
FIGURE 11 WASTE COLLECTION CONTAINERS IN THE MUNICIPALITY OF ROSKOVEC	ERROR! BOOKMARK NOT DEFINED.
FIGURE 12 ENERGY TREATMENT PLANT IN FIER	33
FIGURE 13 % OF COST COVERAGE FROM TARIFFS BY THE MUNICIPALITY OF ROSKOVEC DURING 2016-2025	ERROR! BOOKMARK NOT DEFINED.
FIGURE 14 PLANT FOR COMPOSTING AND RECOVERY OF RECYCLABLE MATERIALS IN MARINZA	ERROR! BOOKMARK NOT DEFINED.
FIGURE 15 MAP OF BUSINESSES IN THE MUNICIPALITY OF ROSKOVEC (SOURCE: EDUARD CANI)	ERROR! BOOKMARK NOT DEFINED.
FIGURE 20 STEPS TO FOLLOW TO IMPLEMENT COST RECOVERY POLICY	ERROR! BOOKMARK NOT DEFINED.
FIGURE 21 STRATEGY FOR COLLECTING FEES	ERROR! BOOKMARK NOT DEFINED.
FIGURE 22 DAILY REPORTING TEMPLATE FOR THE STATUS OF PGM	68
TABLE 1 ADMINISTRATIVE UNITS OF THE MUNICIPALITY OF ROSKOVEC	24
TABLE 2 DEMOGRAPHIC DATA FOR THE MUNICIPALITY OF ROSKOVEC	25
TABLE 3 DEMOGRAPHIC DATA FOR THE MUNICIPALITY OF ROSKOVEC ACCORDING TO THE MFE	ERROR! BOOKMARK NOT DEFINED.
TABLE 4 BUSINESSES AND INSTITUTIONS IN THE MUNICIPALITY OF ROSKOVEC	ERROR! BOOKMARK NOT DEFINED.
TABLE 5 STREET AND SQUARE CLEANING SERVICE IN THE MUNICIPALITY OF ROSKOVEC	ERROR! BOOKMARK NOT DEFINED.
TABLE 6 FIELD EXERCISE FOR WEIGHING THE AMOUNT OF WASTE COLLECTED IN THE MUNICIPALITY OF ROSKOVEC DURING 2021 (TWO WEEKS)	ERROR! BOOKMARK NOT DEFINED.
TABLE 7 CALCULATED GENERATION RATE	29

Local Integrated Waste Management Plan of Roskovec Municipality

TABLE 11 WASTE COLLECTION INFRASTRUCTURE IN THE MUNICIPALITY OF ROSKOVEC	ERROR! BOOKMARK NOT DEFINED.
TABLE 12 VEHICLE FLEET IN THE MUNICIPALITY OF ROSKOVEC	ERROR! BOOKMARK NOT DEFINED.
TABLE 13 WASTE BUDGET VS. GENERAL BUDGET OF THE MUNICIPALITY OF ROSKOVEC	ERROR! BOOKMARK NOT DEFINED.
TABLE 14 CLEANING FEE ACCORDING TO THE FISCAL PACKAGE APPROVED IN 2025	33
TABLE 15 COST COVERAGE BY THE MUNICIPALITY OF ROSKOVEC OVER THE LAST 6 YEARS	ERROR! BOOKMARK NOT DEFINED.
6 . 2 . 2 A R E A	ERROR! BOOKMARK NOT DEFINED.
TABLE 17 PROPOSED SCENARIOS FOR WASTE SERVICE PROVISION IN THE MUNICIPALITY OF ROSKOVEC FOR A 2-YEAR PERIOD (THE MUNICIPALITY IS THEN PREPARING TO BE PART OF THE PZP SCHEME)	ERROR! BOOKMARK NOT DEFINED.
TABLE 18 ANNUAL COST FOR ROAD SWEEPING AND REMOVAL	ERROR! BOOKMARK NOT DEFINED.
TABLE 19 COST OF THE CURRENT BASELINE SCENARIO	ERROR! BOOKMARK NOT DEFINED.
TABLE 20 COST COMPARISON FOR THE FIRST SCENARIO	ERROR! BOOKMARK NOT DEFINED.
TABLE 22 POTENTIAL ECONOMIC BENEFIT FROM THE APPLICATION OF SCENARIO I OF SOURCE SEPARATION SCHEMES	ERROR! BOOKMARK NOT DEFINED.
TABLE 23 POTENTIAL ECONOMIC BENEFIT FROM THE APPLICATION OF SCENARIO II OF SOURCE SEPARATION SCHEMES	ERROR! BOOKMARK NOT DEFINED.
TABLE 25 REVENUE PLANNING – SCENARIO I – LANDFILL FEE	ERROR! BOOKMARK NOT DEFINED.
TABLE 26 REVENUE PLANNING – SCENARIO I – BURN-IN IMPAIRMENT FEE	ERROR! BOOKMARK NOT DEFINED.
TABLE 27 REVENUE PLANNING – SCENARIO II – LANDFILL FEE	ERROR! BOOKMARK NOT DEFINED.
TABLE 28 REVENUE PLANNING – SCENARIO II – COMBUSTION PLANT TARIFF	62

1. INTRODUCTION

1.1 The Need for the Preparation of the Local Waste Management Plan

The **Local Integrated Waste Management Plan for Roskovec Municipality (the Plan)** is a strategic local planning document, prepared in accordance with the relevant sectoral and functional legal requirements, respectively established by Law No. 10463, dated 22.09.2011 “On Integrated Waste Management”, as amended (2013 and 2022), and Law No. 139/2015 “On Local Self-Government”, by translating at the local level the national requirements and standards for waste management.

The Plan is primarily oriented towards concrete and detailed actions related to the implementation of all stages of the waste hierarchy, including collection infrastructure, source separation, reuse, recycling, and final waste treatment. It also includes the involvement of the municipality in the expected Extended Producer Responsibility schemes (2025 onwards).

The objective of the Plan is to optimize service costs, while simultaneously aiming to introduce a more modern and environmentally friendly service. The Plan is developed according to an easily monitorable methodology, also defining the requirements for a fully functional service enterprise capable of implementing the Plan’s requirements with the highest level of accuracy.

More specifically, the Plan is oriented towards:

- Achieving compliance with and operationalization of the requirements of the Strategic Policy Document and the National Integrated Waste Management Plan (2020–2035), as well as its objectives, thereby contributing to the implementation of national policies and the attainment of national objectives in the field of waste management;
- Defining integrated waste management options in accordance with the waste management hierarchy (prevention, reuse, recycling, energy recovery, and final treatment). The Plan identifies the appropriate methods and technologies for achieving the highest standard of waste management;

Local Integrated Waste Management Plan of Roskovec Municipality

- Establishing institutional, organizational, and regulatory instruments through the development of an efficient institutional, organizational, and regulatory framework, and recommending measures for the improvement of its constituent elements towards compliance with the best waste management standards;
- Determining financial requirements for investments, in accordance with the proposed schemes and objectives across all phases of Plan implementation, and in particular for the establishment of new separate waste collection schemes;
- Creating opportunities/a favorable environment for securing funding from other sources, such as governmental funds and funds from international institutions.

The preparation of this Plan has been made possible through the technical and financial support of a project funded by the Government of Germany and implemented by GIZ Albania under Phase II, "Modernized, Climate-Friendly Solid Waste and Recycling Management", and "EU for Circular Economy and Circular Economy for Sustainable Urban Development" under Phase III.

The Technical Team established by the Municipality was supported by experts engaged by the consortium composed of GFA Group, RWA Group, and Eco-DES Studio in the preparation and consultation of the Plan.

In the first phase of the project, a working group was established, comprising representatives from the municipal staff. They have been involved in the development of the Plan from its earliest stages, reviewing and selecting economically feasible options within the municipality's available budget, while ensuring the highest possible level of environmental protection, minimizing impacts on public health, and ensuring compliance with applicable environmental policies and legislation in force.

Each stage of this Plan, including municipal priorities, vision, objectives, options, investments, and timelines, was discussed and agreed upon during the working group meetings.



Figure 1. Meeting of stakeholders of the Local Waste Management Plan in Roskovec Municipality (21 March 2025)



Figure 2. Public Consultation in Roskovec Municipality (2 June 2025)

At various stages of the preparation of the Plan, the working group organized consultation and discussion sessions with the key representatives of the Municipality. The consultation process enabled close cooperation among stakeholders, ensuring alignment with the Municipality's needs and providing opportunities for comments and discussion.

2. 1. NATIONAL POLICY AND LEGAL FRAMEWORK: LEGAL AND INSTITUTIONAL ASPECTS OF WASTE MANAGEMENT

3. National Policies and Fundamental Principles of Waste Management

The Albanian legislation provides for the implementation of measures for source separation, the promotion of separate collection, reuse, recycling, and recovery of different waste streams, including packaging waste, bio-waste, waste electrical and electronic equipment (WEEE), batteries and accumulators, and others. The objective is to reduce the quantities of waste destined for final disposal and to protect, preserve, and improve environmental quality by minimizing negative impacts arising from waste.

With regard to bio-waste, Albanian legislation defines the rules, steps, and timelines for its separate collection for treatment purposes, in order to achieve a high level of environmental protection. Among other provisions, in the case of waste electrical and electronic equipment, the implementation of Albanian legislation aims to improve the environmental performance of all operators, producers, distributors, and consumers involved in the life cycle of electrical and electronic equipment, and in particular operators directly engaged in the treatment of such waste.

In addition to obligations imposed on economic operators, including producers of packaged goods, users, or third parties acting on their behalf, appropriate measures must be taken to inform users about the possibility of reusing packaging or to establish and operate systems for the return and recovery of packaging waste. Economic operators shall take the necessary measures and inform users regarding the possibility of packaging reuse.

Local government units are responsible for taking measures to achieve the objectives within the deadlines defined under the legislation for each of the aforementioned waste streams. The legislation establishes obligations for local government units, which are reflected in local

Local Integrated Waste Management Plan of Roskovec Municipality

strategic instruments such as standard operating procedures for waste management, integrated waste management regulations, and Local Municipal Solid Waste Management Plans. Local plans define specific and interim targets in accordance with local needs and available capacities. Such plans, which must be prepared in line with the national and regional integrated waste management plans, shall include measures and methods for achieving the objectives within the legal deadlines.

Local government units are obliged to establish appropriate measures for separate waste collection, ensuring at minimum a three-stream collection system for:

- Dry recyclable waste;
- Wet (organic) recyclable waste;
- Non-recyclable waste.

Albanian legislation defines specific targets to be achieved by local government units for the reuse and recycling of waste by weight, including paper/cardboard, metals, plastics, and glass.

Local government units designate, in accordance with relevant regulations, collection points for the delivery and collection of packaging waste from both household and non-household users.

In accordance with their waste management plans and local needs, local government units implement bio-waste collection either on a daily, weekly (or longer than weekly) basis, or apply alternative systems such as household composting. The location of bio-waste bins is determined by the respective local government unit. Separate bio-waste collection systems include source-separation bins, dedicated transport vehicles, bio-waste shredding equipment, temporary storage facilities, and transfer stations.

The measures, criteria, and rules to be applied for bio-waste collection and management are defined in the local waste management plan, prepared in accordance with the Regional and National Waste Management Plans.

In areas with individual housing, the local government unit shall provide individual containers to facilitate the proper treatment of bio-waste.

In rural areas, the local government unit shall define, for residents within its jurisdiction, the methods, locations, and timeframes for the treatment of bio-waste at household or neighborhood level. Local government units shall cooperate among themselves to promote:

- a) joint bio-waste collection systems;
- b) the establishment of bio-waste separation schemes.

Such cooperation enables the optimal collection of bio-waste, its reuse and recycling, or its treatment/disposal in the nearest suitable facility, using the most appropriate technologies and methods, in order to ensure a high level of environmental and public health protection.

Each local government unit shall establish a database by collecting periodic information from waste generators of different streams and shall register such data in dedicated records. They are obliged to report to the Regional Council and the relevant Agencies on waste stream collection data and related targets.

Local Integrated Waste Management Plan of Roskovec Municipality

For waste batteries and accumulators, the applicable legislation requires producers and distributors and/or local government units, individually or jointly, to organize awareness-raising campaigns for end-users regarding:

- a) the potential environmental and health impacts of substances used in batteries and accumulators;
- b) the prohibition of disposing of waste batteries and accumulators as unsorted household waste and the need for their separate collection to facilitate treatment and recycling;
- c) the available collection and recycling schemes;
- ç) their role and contribution in the battery and accumulator recycling process;
- d) the meaning of the symbols defined in the relevant Decision.

Regarding hazardous waste streams: for waste electrical and electronic equipment, local government units establish separate collection schemes. Local government units, producers, and distributors or third parties acting on their behalf shall take the necessary measures to minimize the disposal of WEEE as unsorted municipal waste and to ensure a high level of separate collection of WEEE.

Local government units designate and approve collection points for the separate collection of WEEE. Producers, in cooperation with local government units, shall ensure that consumers participate in the separate collection of WEEE and shall encourage their involvement in facilitating reuse, treatment, and recovery processes.

Fees to be paid by waste generators are determined by local government units, in accordance with Article 16, paragraph 3 of Law No. 8652/2000 “On the Organization and Functioning of Local Government”. The fee shall cover the costs of waste management from collection to final disposal.

The Draft Law on Integrated Waste Management aims to harmonize Albanian legislation with the EU acquis by transposing the Waste Framework Directive (2008/98/EC) and related regulations on landfill (1999/31/EC), incineration (IED Directive), waste electrical and electronic equipment (2012/19/EU), packaging and packaging waste (94/62/EC), and single-use plastics. The law establishes the waste hierarchy, emphasizing the “polluter pays” principle and “extended producer responsibility”. Objectives include increasing recycling rates to 55%–65% by 2035, reducing landfill disposal, and banning the incineration of separately collected recyclable waste. It also aims to improve waste treatment infrastructure, including the construction of composting and mechanical-biological treatment plants. Investment costs up to 2035 are estimated at EUR 675 million, with a positive impact on employment and the economy. The law will be implemented by the Ministry of Tourism and Environment, the National Environment Agency, and local government units, improving environmental quality and citizens’ living standards.

1.1.1 1.1 Institutional Aspects of Waste Management

1.1.2 Central Level Organization

The main responsible actors in the current period 2024–2025 at the national level in the field of waste management are the Ministry of Tourism and Environment, the Ministry of Infrastructure and Energy, the Ministry of Health and Social Protection, the Ministry of

Local Integrated Waste Management Plan of Roskovec Municipality

Agriculture and Rural Development, and the National Waste Economy Agency, established as of March 2024.

In accordance with the applicable environmental legislation, the ministry responsible for the environment is the specialized institution and the principal authority for the development of waste management policy, the drafting of legislation, guidelines, and regulations, as well as for implementation at central level through its subordinate institutions, namely the National Environment Agency (NEA) and the four Regional Environment Agencies (REAs). Pursuant to Council of Ministers Decision No. 568, dated 17.07.2019 “On the Establishment and Mode of Organization of the National Environment Agency”, the NEA is an institution under the Ministry of Tourism and Environment with the objective of protecting, preserving, and improving the environment as a vital asset for present and future generations, preventing and reducing risks to human life and health, ensuring and improving quality of life, and promoting the prudent and rational use of natural resources within the framework of sustainable development. Under this reorganization, the NEA performs four core functions: (i) ensuring environmental performance across the national territory; (ii) environmental research and knowledge management; (iii) environmental impact assessment and licensing; and (iv) inspection and thematic control for compliance with legal and environmental requirements. The new structure also foresees a regional level, with four REAs distributed across the territory, which implement their respective functions within their jurisdictions and report to the Director General of the NEA.

National Environment Agency (NEA)

The National Environment Agency (NEA) is responsible for issuing environmental permits for waste management activities. The Agency shall organize the national waste management information system and shall receive, process, and verify annual reports from local authorities and companies engaged in the generation, collection, recovery, and disposal of various waste categories. The NEA is also required to establish a mandatory register of producers and importers of packaged goods, electrical and electronic equipment, and to collect reports on quantities of products and packaging placed on the market, as well as on resulting waste that is collected, recycled, and recovered. Based on the collected information, the NEA is also responsible for preparing the annual report on waste management in Albania.

National Waste Economy Agency (NWEA)

Pursuant to Council of Ministers Decision No. 132, dated 06.03.2024 “On the Establishment, Organization and Functioning of the National Waste Economy Agency”, and the Order of the Prime Minister No. 94, dated 12.06.2024 “On the Approval of the Structure and Organization of the National Waste Economy Agency”.

The National Council of Territory, in accordance with the applicable legal framework, approves site permits and construction permits for facilities (including landfills) with an area greater than 0.5 ha located outside the administrative boundaries of urban/rural settlements.

The ministry responsible for health, in cooperation with the ministry responsible for the environment and in implementation of the Law on Integrated Waste Management, prepares regulations for waste management across different levels of the waste hierarchy and also develops and implements regulations for hospital waste (approved by Instruction No. 6, dated 30.11.2007).

Local Integrated Waste Management Plan of Roskovec Municipality

The ministry responsible for finance, in cooperation with the ministry responsible for the environment, is responsible for drafting legislation related to the introduction of various environmental taxes.

1.1.3 Local Level Organization

Tasks and Responsibilities:

Based on Law No. 139/2015 “On Local Self-Government” and Law No. 10463, dated 22.09.2011 “On Integrated Waste Management”, as amended in 2013 and 2022, municipalities are responsible for organizing the collection, transport, treatment, and final disposal of waste services. In implementation of the legal framework, the municipality, among other things:

- i. Defines municipal structures for the administration and monitoring of waste management services, as well as for the inspection of the urban territory;
- ii. Allocates an adequate budget to cover operational costs and investments in the field of waste management; sets fees for municipal solid waste management within its jurisdiction and authorizes public or private entities to collect them;
- iii. Drafts and approves specific local territorial regulations for each waste management method, in accordance with standard regulations approved by the line ministries;
- iv. Prepares local or regional waste management plans in cooperation with regional authorities and neighboring local authorities;
- v. Determines appropriate locations and methodologies for waste collection, treatment, and final disposal in accordance with environmental criteria and development plans;
- vi. Collects data, maintains the local waste register, and carries out awareness-raising campaigns.

In accordance with environmental and waste legislation, municipalities have the following obligations:

- (i) To safeguard public hygiene where it is threatened by pollution caused by generated or abandoned waste;
- (ii) To implement projects and investments for the improvement of the urban environment in relation to waste pollution;
- (iii) To monitor and inspect all waste management processes from collection to final disposal, in compliance with national environmental standards and local regulations and manuals;
- (iv) To inspect the “waste holder” in order to ensure compliance with national and local rules and standards, and to impose sanctions in case of violations;
- (v) To cooperate with Regional Environmental Agencies (REAs) in the issuance of environmental permits for natural and legal persons, including activities related to waste management processes;
- (vi) To cooperate with REAs and other inspectorates in conducting inspections of waste and related activities within the local territory and jurisdiction;
- (vii) Each local government unit acts as the contracting authority for concessions related to economic activities within its jurisdiction and, consequently, also for waste-related concession projects (Article 5 of Law No. 9663).

Municipal Council: is the local representative authority with direct responsibility for approving the waste budget and investments, approving urban waste management structures,

Local Integrated Waste Management Plan of Roskovec Municipality

approving waste fee levels, and approving regulatory and strategic documents (plans, action plans), and is involved in the process of granting permits for hazardous waste sites (Law No. 9537).

Municipal Police: is responsible for identifying and preventing environmental pollution and improper waste disposal, and for ensuring the enforcement of orders, local acts, and decisions related to waste management.

Public Services Enterprise:

The Public Services Enterprise has a staff structure of 66 employees, of which 35 are assigned to public services, 28 work in the greening and composting sector, and 2 are in administrative positions, including sector heads. The enterprise carries out duties and responsibilities related to waste management services within the territory of Roskovec Municipality, starting from the network of collection points with bins/containers as well as open collection points, transportation, and disposal for further treatment at the composting facility and the Fier Incinerator as the final disposal point.

1.1.4 Instruments for Waste Management at Local Level

Based on the Framework Law on Integrated Waste Management, adopted in 2011 and amended in 2013 and 2022, Local Government Units (LGUs/Municipalities) are required to develop local instruments for the planning, implementation, monitoring, and control of waste management services, as follows:

- **Local Integrated Municipal Solid Waste Management Plan:** the main planning instrument for defining the vision and specific objectives, which are economically and environmentally feasible, regarding the strategic direction to be undertaken by the municipality in the field of waste management. These specific objectives must reflect the orientations of national policy towards integrated waste management, updated in accordance with the municipality's existing situation. Based on the agreed objectives at all decision-making levels and with stakeholders, the plan analyses possible service organization scenarios, including the associated costs and the fiscal policy that the municipality should follow to ensure full cost recovery. It concludes with a concrete action plan divided into timeframes within a five-year period, according to the respective responsibilities of the actors involved in its implementation. The Plan is a planning document that enters into full legal force upon approval by the Municipal Council.
- **Municipal Regulations on Waste Management for Each Specific Waste Stream:** it is the responsibility of Roskovec Municipality to draft these regulations (in accordance with the requirements of the new territorial-administrative division), defining the methodologies and rules for urban cleaning services and waste management for all specific waste streams within the municipality's administrative territory. These regulations also establish procedures for citizen complaints, as well as provisions for sanctions in case of non-compliance by different actors. The regulation must be approved by the Municipal Council in order to acquire full legal force.
- **Regulations on Cost Calculation and Waste Tariffs:** these regulations shall clarify the work of the finance and tariff staff, who, in cooperation with the technical service management staff, must calculate the annual cost and define the fiscal policy best suited to the municipality's needs, based on affordability for consumers as well as full cost recovery through cleaning tariffs. These regulations must be approved by the Municipal Council.
- **Monitoring System Model:** this is an instrument that the municipality must develop and implement, initially starting with the urban areas where control is easier, and subsequently extending it to rural areas and other service zones. Through the development and application of a monitoring system model across its entire territory, the municipality will gain a clearer understanding of service delivery levels, identify areas requiring intervention for improvement, and potentially revise specific objectives

Local Integrated Waste Management Plan of Roskovec Municipality

for different areas or categories of users. Through this system, sanctions—primarily for private service providers, businesses, and household users—can be enforced more effectively.

• **Information Strategy:** another highly important instrument for the successful implementation of the integrated municipal solid waste management plan. The municipality must ensure full community engagement by informing citizens about the waste management scheme being implemented within its territory and the fiscal policy being applied. The municipality should develop an information strategy from the earliest stages of plan preparation, informing the community about the initiative undertaken, defined objectives, proposed scenarios, and the fiscal policy to be pursued. This strategy should also define further periodic stages to be repeated annually, with the main aim of informing the community about municipal processes and collecting their feedback on service performance and potential suggestions. The use of questionnaires and public hearings at different stages of plan implementation are among the key elements that the information strategy should include, in order to measure public opinion, which should be reflected both in service improvement and in the information strategy itself.

2 INTRODUCTION

Geographical Context and Demographic Profile

Roskovec Municipality is part of Fier County, with a total area of 118.01 km², located in the western part of the country. It is bordered to the north by Lushnje Municipality, to the south by Patos and Mallakastër municipalities, to the west by Fier and Patos municipalities, and to the east by Dimal and Berat municipalities. It consists of four administrative units: the town of Roskovec, Strumë, Kurjan, and Kuman, and 15 villages.

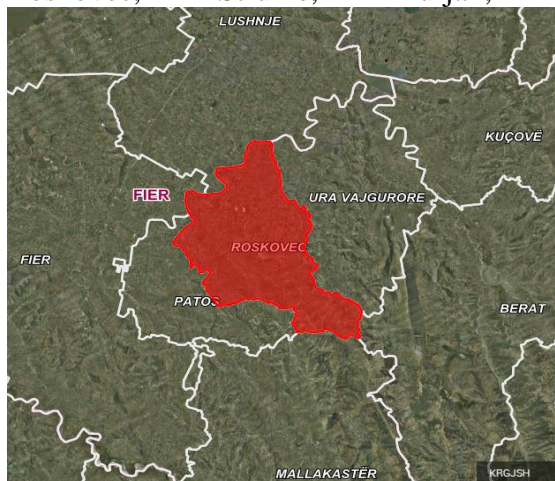


Figure 3. Geographical Location of Roskovec Municipality

Table 1. Administrative Units of Roskovec Municipality

Administrative Unit	km ²	Village	km ²
Kurjan	37	Kurjan	15.09
		Ngjeqar	9.2
		Vlosh	5.7
		Mbers	4
Strum	35.2	Strum	12
		Suk-1	7.4
		Suk-2	5.9
		Arapaj	4.9
		Velmish	5
Roskovec	19	Roskovec	15
		Jagodine	4
Kuman	32	Kuman	5.6
		Marinez	9.6
		Vidhisht	5.5
		Luar	9.3
Total area			118.01

Population

There are two official sources of data on population figures, namely the data from INSTAT (Census 2023) and the Civil Registry, which are presented below in Table 2.

Local Integrated Waste Management Plan of Roskovec Municipality

The population figure according to the Civil Registry is significantly higher than the figure provided by INSTAT. For this reason, the Ministry of Finance and Economy introduces a correction factor for calculating the population size based on data from both INSTAT and the Civil Registry.

$$\text{Population} = [\text{Population}_{\text{census}} + \text{Civil Registry} - \text{Population}_{\text{census}}] \times 30\%$$

Based on the Civil Status Registry, the population in December 2024 is 32,977 inhabitants. The table below presents detailed demographic data provided by the Prefecture of Fier for Roskovec Municipality over the last five years, which indicates a slight increase in both population and the number of households according to the Civil Status Registry.

Table 2. Demographic Data for Roskovec Municipality

A.Unit	2020		2021		2022		2023		2024	
	No. pop	No. fam	No. pop	No. fam	No. pop	No. fam	No. pop	No. fam	No. pop	No. fam
Roskovec	9,139	2,943	9,081	2,946	9,062	2,947	9253	3013	9278	3028
Strumë	9,622	2,666	9,628	2,681	9,654	2,734	9754	2808	9789	2849
Kuman	8,619	2,499	8,558	2,519	8,499	2,543	8563	2594	8567	2601
Kurjan	5,383	1,541	5,318	1,540	5,293	1,563	5346	1635	5343	1649
Totali	32,763	9,649	32,585	9,686	32,508	9,787	32916	10050	32977	10127

As can be observed from the chart below, the population of Roskovec Municipality has shown a steady increase in recent years.

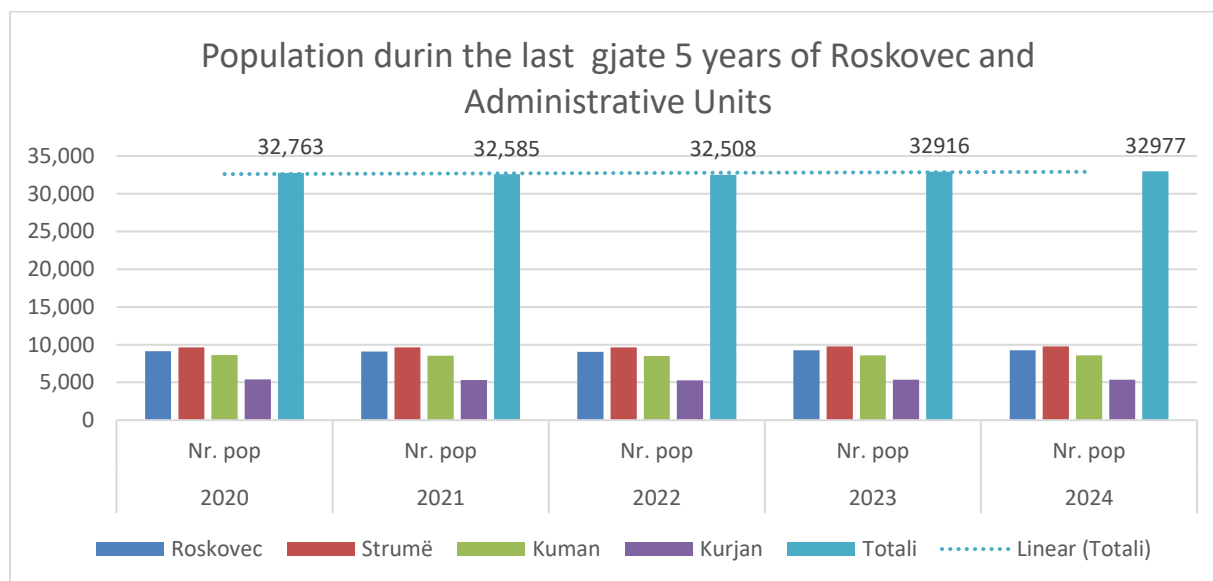


Figure 4. Population over the last 5 years in Roskovec Municipality (2020–2024)

A nearly similar situation is also reflected in the number of households, which over the 5-year period has increased by 4.57%. The highest number of households has been recorded in the Roskovec Administrative Unit.

Local Integrated Waste Management Plan of Roskovec Municipality

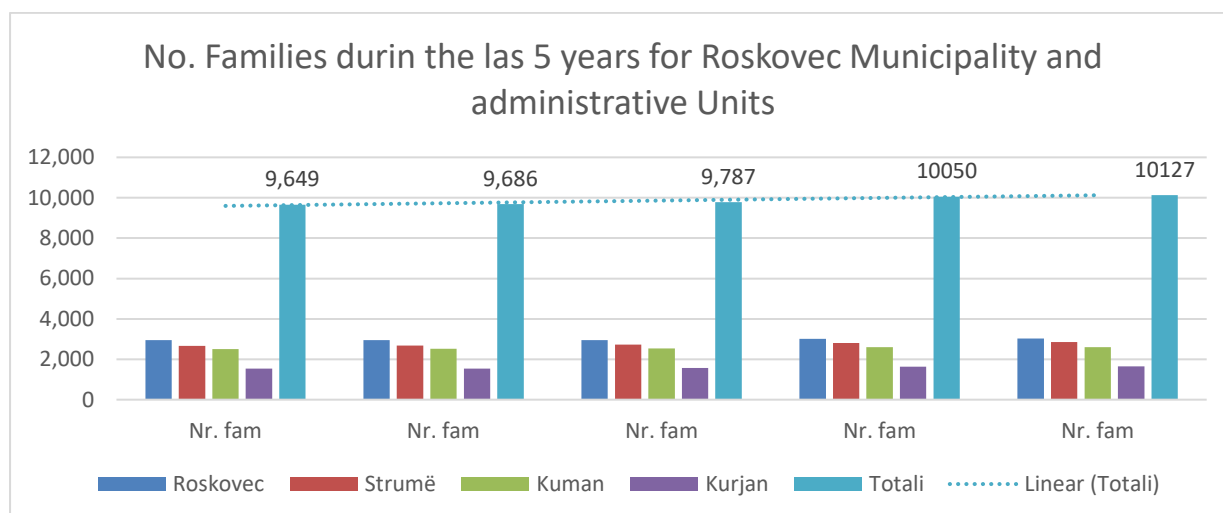


Figure 5. Number of households in Roskovec Municipality over the last five years

As agreed with the working team and the expert contracted by GIZ, the population figures to be used for the preparation of the local plan are those of the 2023 Census (16,332 inhabitants), rather than the population figures from the Civil Registry, which report 32,977 inhabitants for the year 2024, as provided by Roskovec Municipality, as illustrated below for both population and household numbers:

Table 3. Demographic data for Roskovec Municipality according to the MFE methodology

A.U	Civile register 2023	Census 2023	MFE	Civile register 2024	Census 2023	MFE
	Nr. pop	Nr. pop	Nr. pop	Nr. fam	Nr. fam	Nr. fam
Roskovec	9253	4078	6,224	3028	1344	2,004
Strumë	9754	5684	8,163	2849	1857	2,262
Kuman	8563	4154	6,513	2601	1376	1,952
Kurjan	5346	2416	4,148	1649	813	1,188
Total	32916	16332	25,048	10127	5390	7,406

Economic Profile

Roskovec Municipality has a more pronounced agricultural character compared to other municipalities, where agriculture remains the economic sector employing the largest share of the population, accounting for approximately 54.9% of total employment, compared to 17% in the industrial sector and 28.1% in the services sector. Employment in the agricultural sector within the town of Roskovec does not exceed 2.5%, while the population residing in the other administrative units of the municipality is predominantly employed in agriculture, thus making agriculture the main sector of the local economy.

Local Integrated Waste Management Plan of Roskovec Municipality

The agricultural sector is represented by numerous agricultural, livestock, and mixed farms, as well as approximately 37 agro-processing entities. The number of farms is quite representative within the Fier Region, particularly in the production of greenhouse vegetables, fodder crops, melons, and in the high yields of cattle, goat, calf, and small livestock milk production. However, Roskovec does not have any agricultural collection point.

Roskovec has a total area of 118.01 km², of which 8,890 ha are agricultural land, where various products are cultivated such as cereals, vegetables, and fodder crops, while orchards and olive groves are also present. In addition to agricultural production, Roskovec is also known for livestock farming. The municipality has farms occupying an area of 3.6 ha of land. The basis of livestock development continues to be cattle, although in recent years there has not been a significant increase in the number of cattle heads. Nevertheless, a positive development in this regard is breed improvement and livestock units ranging from 10 to 30 heads for meat and milk production.

The industrial sector is represented by several agro-processing entities of light industry, as well as the oil extraction and processing industry. The number of wells in Roskovec Municipality is the highest among all oil-bearing areas in Albania, while the yield produced is the lowest, accounting for approximately 0.2% of crude oil resources. Employment in this sector accounts for only 17% of total municipal employment.

Business activity is represented by 416 small businesses, 76 large businesses, and 26 institutions operating within the territory of the municipality and subject to local taxes such as the cleaning fee. As shown in the table below, the Roskovec Administrative Unit (urban area) has the highest number of registered businesses, followed by the Strum Administrative Unit:

Table 4. Businesses and institutions in Roskovec Municipality

Types of Business	Roskovec	Kurjan	Stumë	Kuman	Total
Small Business	198	32	101	85	416
Large Businesses	30	2	34	10	76
Institution	13	4	5	4	26

3. PROVISION OF WASTE MANAGEMENT SERVICES IN ROSKOVEC MUNICIPALITY

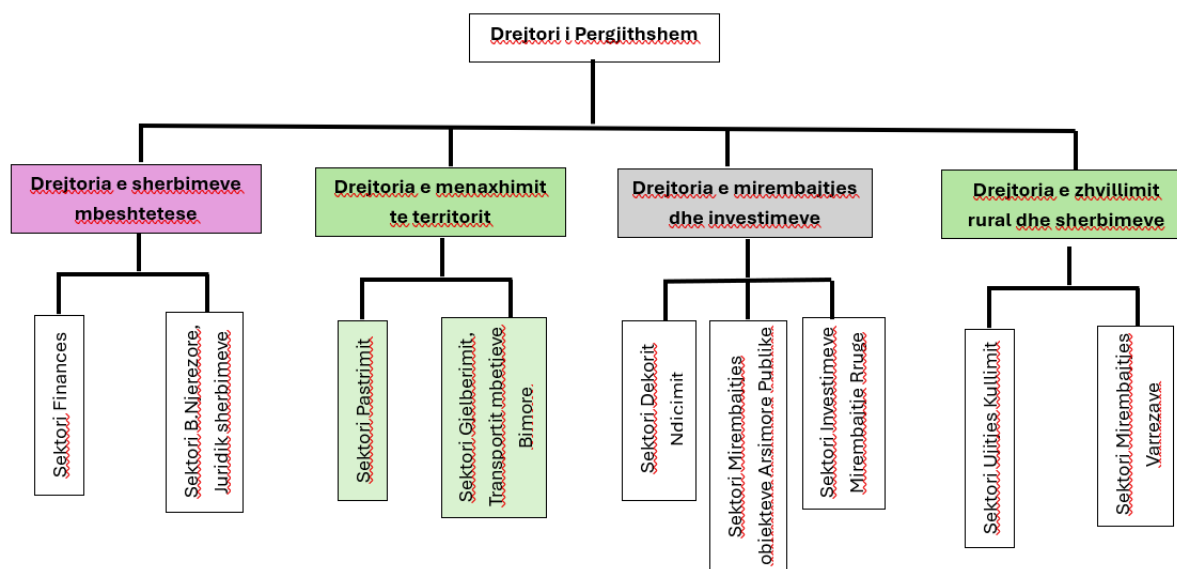
Institutional Organization of the Waste Management Service

The baseline was established based on data collected by the local working group set up by the Municipality and supported by the experts of GIZ/GFA/EcoDES Studio.

The waste management service (cleaning service) is provided by the Municipality through the “Greening, Cleaning and Cemetery Maintenance Enterprise.” This enterprise, together with the “Public Institutions, Road Lighting, Road Maintenance and Education Enterprise,” operates under the Public Services Sector, which is responsible for the waste management service.

Local Integrated Waste Management Plan of Roskovec Municipality

The Public Services Enterprise has a total of 66 employees in its structure, of which 35 are assigned to public service activities, while 28 work in the greening and composting sector. Two employees hold administrative positions, including sector heads. They carry out duties and responsibilities related to waste management services within the territory of Roskovec Municipality, starting from the network of collection points with bins/containers as well as open collection points, the transport of waste, and its disposal for further treatment at the composting facility and the Fier Incinerator as the final destination.



Institutional Organization of the Waste Management Service

The baseline was established based on data collected by the local working group set up by the Municipality and supported by the experts of GIZ/GFA/EcoDES Studio.

The waste management service (cleaning service) is provided by the Municipality through the “Greening, Cleaning and Cemetery Maintenance Enterprise.” This enterprise, together with the “Public Institutions, Road Lighting, Road Maintenance and Education Enterprise,” operates under the Public Services Sector, which is responsible for the waste management service.

The Public Services Enterprise has a total of 66 employees in its structure, of which 35 are assigned to public service activities, while 28 work in the greening and composting sector. Two employees hold administrative positions, including sector heads. They carry out duties and responsibilities related to waste management services within the territory of Roskovec Municipality, starting from the network of collection points with bins/containers as well as open collection points, the transport of waste, and its disposal for further treatment at the composting facility and the Fier Incinerator as the final destination.

NJA	Cleaning of the strits		Streets	
	Time of the services offered	Area (m ²)	Time of the services offered	Area (m ²)
Roskovec	1 April – October (02:00 – 09:00)	104,620	May– September (06:30 – 08:30)	73,000
Strume	November - March (03:00 – 10:00)	74,075	n/a	
Kuman		43,330		

Local Integrated Waste Management Plan of Roskovec Municipality

Kurjan	During Rainy day 05:00 – 12:00	29,600	
Total		251,625	

With the support of GIZ, a field exercise was carried out over one week in September and one week in October 2021 to measure the quantity of waste collected daily by each Administrative Unit during those weeks, as presented in the tables below:

Table 6. Field exercise on the weighing of waste quantities collected in Roskovec Municipality during 2021 (two weeks)

No.	Date	Waste Quantity (kg/day)	% of urban waste	Quantity of urban waste (kg/day)
1	31.08.2021	15,095	80.4%	12,136.38
2	1.09.2021	13,965	91.0%	12,708.15
3	2.09.2021	9,860	95.3%	9,396.58
4	3.09.2021	12,170	92.3%	11,232.91
5	4.09.2021	11,110	95.0%	10,554.50
6	6.09.2021	19,960	95.0%	18,962.00
Total		82,160	92%	75,176.40
Average Daily Quantity of Collected Waste				12,529.4

No.	Date	Quantity of waste (kg/day)	% of urban waste	Quantity of urban waste (kg/day)
1	12.10.2020	28,728	86%	24,706
2	13.10.2020	23,535	84%	19,769
3	14.10.2020	12,930	80%	10,344
4	15.10.2020	14,710	79%	11,621
5	16.10.2020	13,230	80%	10,584
6	17.10.2020	17,600	84%	14,784
Total		110,733	82.17%	90,986
Average Daily Quantity of Collected Waste				15,164.27

Based on these data, which are grounded in actual measurements, the average daily quantity of waste potentially collected by Roskovec Municipality is estimated at 13,847 kg/day = 13.8 tons/day. In total, Roskovec Municipality generates a quantity of municipal solid waste of (13.8 tons/day × 365 days) = 5,037 tons of waste/year.

However, based on the reported waste data for 2024, the recorded quantity is (9.74 tons/day × 365 days) = 3,557.96 tons of waste/year. This is mainly associated with the decrease in the

Local Integrated Waste Management Plan of Roskovec Municipality

population of Roskovec Municipality, taking as a reference the population according to the 2023 Census.

During November 2021, as mentioned above, the Marinzë disposal site was no longer used, and municipal solid waste began to be transported to the Energy Recovery Facility in Fier. Since December 2021, the Fier facility has provided regular data on the quantity of waste transported for final treatment. According to the new Council of Ministers Decision No. 538, dated 22.09.2021, on waste statistics, all local self-government units that send waste to a sanitary facility where weighing is carried out must determine the generation rate based on the quantity of weighed waste and the population figure according to the formula of the Ministry of Finance and Economy, in cases where no field exercise has been conducted to date.

Based on the reported total waste quantities for 2023 and 2024, the average waste generation rate in Roskovec Municipality is calculated at 0.425 kg/capita/day, as shown in the table below.

Tabela 7 Calculated generation rate

The quantity of waste weighed at the Waste Treatment Plant in Fier.		
Year 2024	ton/year	kg/inhabitants/day
Year 2023	2342.8	0.392
Year 2024	2726.46	0.457
The average rate of generation		0.425

Municipal Waste Composition

Based on data collected during the waste characterization campaign, the average percentages of the main waste streams in Roskovec Municipality for the year 2021 are presented in the graph below.

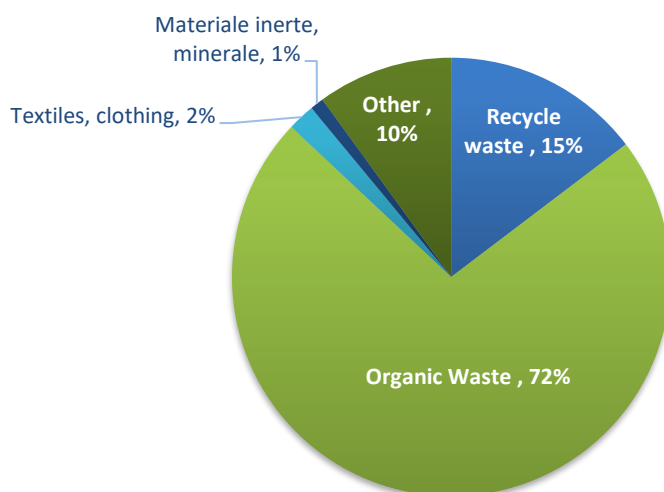


Figure 10: Waste stream composition campaign – average percentages for the city of Roskovec

Local Integrated Waste Management Plan of Roskovec Municipality

As this is the first field campaign conducted in the Municipality of Roskovec to determine the proportions of different waste streams, it can be stated that the municipality generates approximately 72% organic waste, 15% recyclable waste, 2% textiles and clothing, 1% inert materials and minerals, and 10% other waste.

Waste management system infrastructure

The Municipality of Roskovec provides waste management services through its public utility enterprise. From 2016 to 2024, it has installed 189 containers of 1.1 m³ across the four Administrative Units where the service is provided. The Administrative Units of Roskovec and Strumë have the highest number of containers within their territories, followed by the other two administrative units, as shown in the table below:

Table 11: Waste collection infrastructure in the Municipality of Roskovec

Administrative Unit	No. metal containers	Capacity (m ³)
Roskovec	72	1.1
Strumë	68	1.1
Kuman	25	1.1
Kurjan	24	1.1
Totali	189	

Their technical condition is very good, as they were procured during the 2023–2024 period, as illustrated in the photographs below:



Figure 11: Waste collection containers in the Municipality of Roskovec

Through the assistance provided by the GIZ Albania-funded project, over the past two years (2020–2021), the Municipality of Roskovec has also developed a scheme for the collection of plastic and cardboard waste in a pilot area within the city.

The waste collection and transport service is provided across all administrative units of the municipality through a vehicle fleet consisting of two compactor trucks with capacities of 10 and 16 tons, two dump trucks (5 and 7.5 tons), two 1-ton pickup trucks for rural areas, and one water tanker used for street washing.

Local Integrated Waste Management Plan of Roskovec Municipality

Table 12: Vehicle fleet of the Municipality of Roskovec

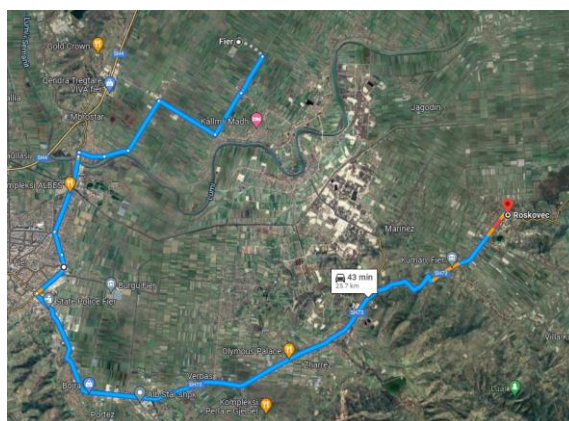
No. Type of vehicle	Type of vehicle	Year of production	Viti i blerjes nga bashkia	Capacity (ton)	Technical condition
1.	Waste collection vehicles	2006	2017	10	Almost good
2.	Waste collection vehicles	2010	2023	16	Very good
3.	Self-unloading truck	1996	2012	5	Very poor
4.	Self-unloading truck	1993	2010	7.5	Very poor
5.	Pickup truck	2011	2014	1	Very poor
6.	Pickup truck	2012	2015	1	Very poor
7.	Water tanker truck	1998	2016	9 m ³	Almost good
8.	Scrap collection vehicle	2001	2021	1 m ³	Almost good

In these circumstances, the Municipality of Roskovec has a significantly underdeveloped infrastructure for the proper implementation of daily waste collection and transportation services. The existing 189 containers do not cover the entire territory, and in some cases the service is carried out on a door-to-door basis. Although this type of service provision may ensure a certain level of efficiency and reduced environmental pollution, several factors do not support this assumption. Community engagement in adhering to the designated waste collection schedule is low. In several instances, residents act carelessly and request that the municipality collect waste at their convenience, thereby causing serious challenges to service efficiency and contributing to environmental pollution, as waste is often disposed of in open spaces when it is convenient for them. This set of issues requires a strategy combining awareness-raising campaigns, the enforcement of fines in cases of non-compliance, and improved infrastructure for waste collection in order to reach the entire community.

Another issue that compromises the quality and efficiency of service delivery is the widespread use of rear-loading trucks even in areas equipped with containers. In order to collect waste from the containers, workers are required to empty them on-site and manually load the waste into the trucks, using shovels or any other tools deemed appropriate.

Waste Treatment – Energy Recovery Facility in Fier

As of November 2021, the municipality has been transferring waste to the Energy Recovery Facility located in Fier.



Local Integrated Waste Management Plan of Roskovec Municipality

Figura 12 Impianti me Trajtim Energjie në Fier

Lokacioni: <https://www.google.com/maps/dir/40.7760171,19.6260405//@40.7755396,19.6248835,815m/data=!3m1!1e3>

2.1.1 Energy Recovery Facility in Fier

During the period 2014–2017, the Government of Albania initiated the first concessions for the development of Energy Recovery Facilities in Elbasan, Tirana, and Fier. The Energy Recovery Facility in Fier, located approximately 6 km northeast of the city of Fier, has been developed under a Public–Private Partnership arrangement, with a total investment of €28.5 million. The project comprises: (i) the construction of a sanitary landfill (operational since April 2020); (ii) the development of a regional sanitary landfill for incinerator ash disposal; (iii) the Energy Recovery Facility; and (iv) a wastewater treatment plant for the management of landfill leachate.

The facility has a designed processing capacity of approximately 87,600 tons per year (180–200 tons per day, with an estimated 10–15% ash residue), and an installed electricity generation capacity of 3.8 MW.

During the most recent period (April–May 2022), the Municipality of Roskovec, along with other municipalities within the Fier waste management region, has been required to dispose of municipal solid waste at this facility, subject to a gate fee of €10/ton for landfill treatment and €25–30/ton for treatment at the Energy Recovery Facility. The facility is located approximately 15 km from the city of Roskovec (one way).

Items	Fact 2024	Plan 2025
Overall budget of the municipality	640,785,314 Lekë	694,881,799 Lekë
waste budget	37,601,880 Lekë	37,601,880 Lekë
% the waste management budget in relation to the municipality's total budget	5.86%	5.41%

Cleaning fees for different categories of users, including households, businesses, and institutions, are established by the Municipality of Roskovec and are subject to annual approval by the Municipal Council within the annual fiscal package, alongside other local taxes and fees. Household cleaning fees are determined on an annual basis and are applied uniformly to all households. Variations apply solely between administrative units, depending on the level of service provision.

Exemptions from this fee are granted on the basis of socio-economic criteria, as detailed below:

- Pensioners living alone: Eligibility is verified on the basis of civil status registry data and certificates issued by the Social Insurance Institute.
- Heads of households who are disabled or persons with disabilities: Eligibility is confirmed through a certificate issued by the Economic Assistance Office of the Municipality of Roskovec.

Local Integrated Waste Management Plan of Roskovec Municipality

For categories of residents residing abroad or in another city, the Municipality applies a policy under which, upon submission of official documentation confirming actual residence elsewhere, individuals are exempted from the obligation to pay the cleaning fee. However, in cases where such individuals spend time at their residence within the Municipality of Roskovec, the fee shall be calculated proportionally to the duration of stay, according to the following formula: number of days × daily cleaning fee (annual fee / 365 days) = the amount payable to the Municipality.

In accordance with the fiscal package approved for 2025, the Municipality of Roskovec applies the following cleaning fees for household categories:

Table 14: Cleaning fees according to the fiscal package approved in 2025

Administrative Units	Lek/ year/family
Roskovec	2,000
Strumë	1,200
Kuman	1,200
Kurjan	1,200

For businesses, the Municipality has established cleaning fees for 58 business categories, which are required to pay the cleaning fee by 20 April of the previous year. Households are required to pay the cleaning fee by 30 December of the current year. For institutional categories, the Municipality applies a flat cleaning fee of 15,000 ALL per year.

Based on municipal data, over the past six years, the collection of cleaning fees has not covered more than 49% of the total service cost, with the business category bearing the highest fiscal burden.

Table 15: Cost recovery in the Municipality of Roskovec over the past six years

No.	Year	Costs of Services	Cleaning fee revenue collected by category (Lek/Year)				% Cost recovery from fees			
			Lek/year	Total	Business	Families	Institution	Total	Business	Family
1	2016	26,653,000	8,599,000	6,798,000	1,801,000	0	32%	26%	7%	0%
2	2017	22,970,000	8,630,000	6,808,000	1,822,000	0	38%	30%	8%	0%
3	2018	27,073,000	8,893,000	7,009,000	1,884,000	0	33%	26%	7%	0%
4	2019	31,927,000	10,793,000	7,063,000	3,730,000	0	34%	22%	12%	0%
5	2020	33,890,000	9,678,000	6,274,000	3,404,000	0	29%	19%	10%	0%
6	2021	31,628,000	13,827,000	8,579,000	5,218,000	30,000	44%	27%	16%	0%

Local Integrated Waste Management Plan of Roskovec Municipality

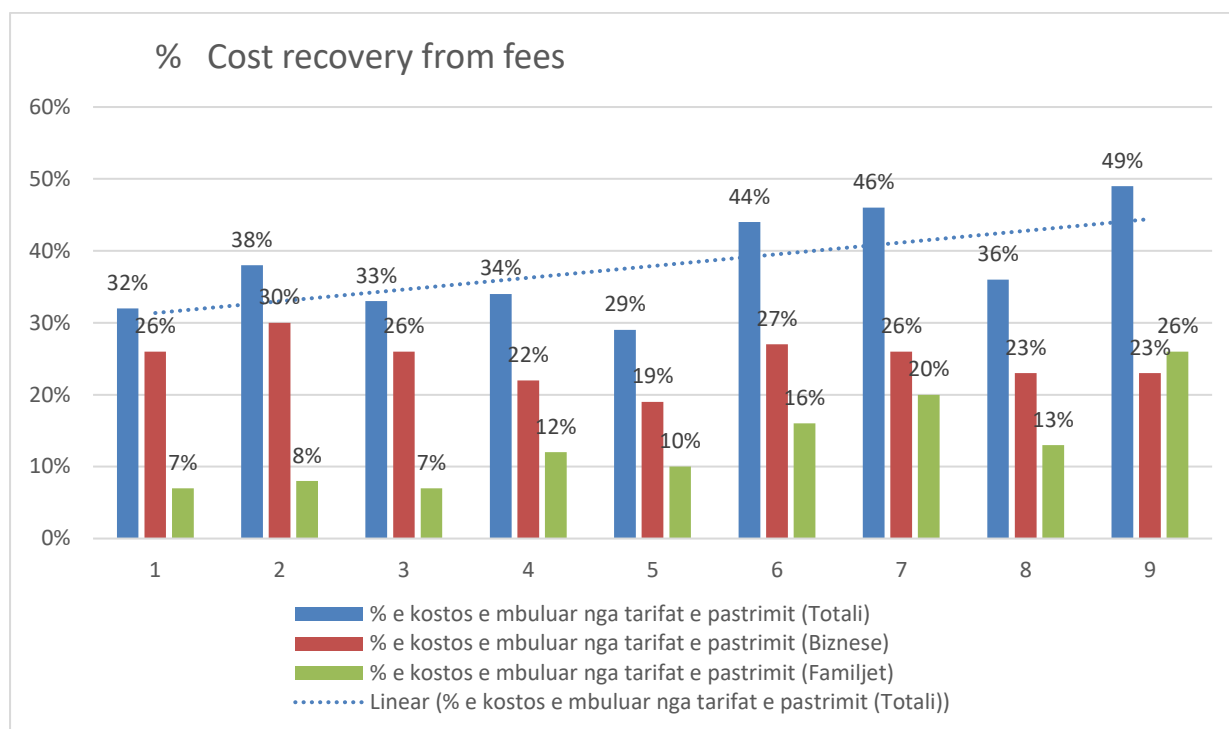


Figure 13: Percentage of cost recovery from fees in the Municipality of Roskovec during 2016–2025

Although the fiscal burden among service beneficiaries for the cost of the service is distributed at 55% for households, 40% for businesses, and 5% for institutions, the data presented in the graph indicate that household fees cover only 30% of the cost instead of 55%, while businesses perform better, reaching up to 40% as defined. In the case of institutions, they practically do not cover any percentage of the cost.

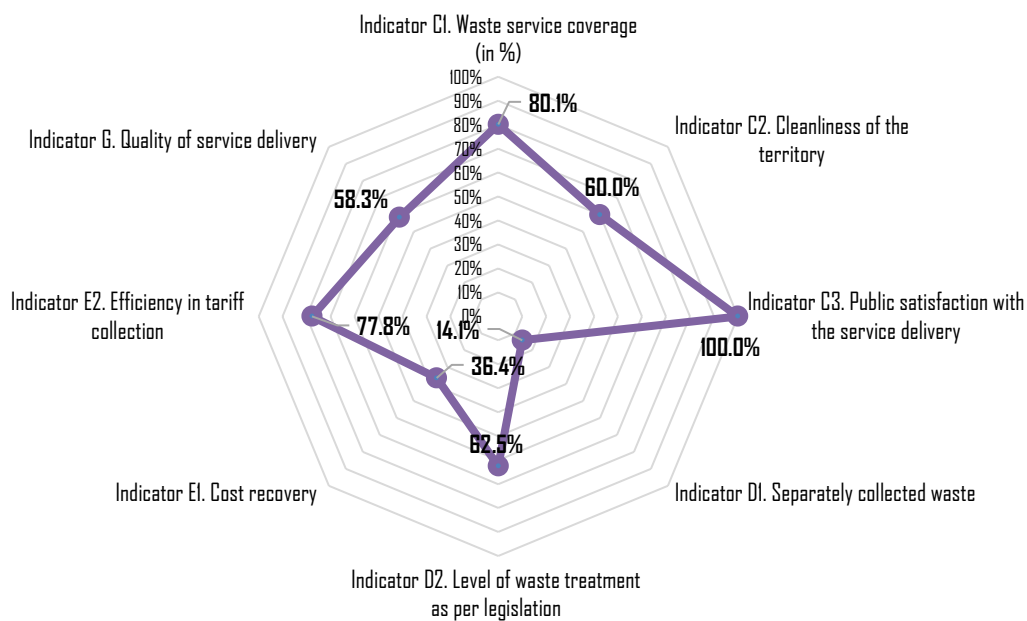
3. DEFINITION OF PERFORMANCE INDICATORS

In order to develop an integrated waste management plan for the Municipality of Roskovec, the establishment of SMART objectives is of paramount importance. Accordingly, a set of performance indicators has been developed, comprising both qualitative and quantitative indicators. As a good practice applied in other municipalities in Albania, the Performance-Based Planning Manual and the corresponding performance indicators table will be utilized. These indicators take into account four key aspects of service delivery and are presented below for the years 2023 and 2024.

Local Integrated Waste Management Plan of Roskovec Municipality

KPI 2023			
C - Cilësia e shërbimit	Indikatori C1. Mbulimi i zonës me shërbim (në %)	Indicator C1. Waste service coverage (in %)	Vlerësimi 80.09%
	Indikatori 1. Zona Urbane - Mbulimi i zonës me shërbim	Sub-Indicator 1. Urban area – Service coverage	91.30%
	Indikatori 1. Zona Rurale - Mbulimi i zonës me shërbim	Sub-Indicator 1. Rural area – Service coverage	69.27%
	Indikatori C2. Cilësia e pastrimit	Indicator C2. Cleanliness of the territory	60.00%
	Indikatori C3. Kënaqësia e publikut	Indicator C3. Public satisfaction with the service delivery	100.00%
D - Qendrueshmeria mjedisore	Indikatori D1. Shkalla e grumbullimit të diferencuar të mbetjeve	Indicator D1. Separately collected waste	14.13%
	Indikatori D2. Shkalla e trajtimit të mbetjeve në përputhje me legjislacionin	Indicator D2. Level of waste treatment as per legislation	62.46%
E - Qendrueshmeria financiare	Indikatori E1. Shkalla e rikuperimit të kostos	Indicator E1. Cost recovery	36.38%
	Indikatori E2. Eficiencia në mbledhjen e tarifave	Indicator E2. Efficiency in tariff collection	77.77%
NJESI	Indikatori kosto njesi per ton	Indicator: Cost/ton	11481.9
	Indikatori kosto njesi per banor	Indicator: Cost/Capita	1316.0

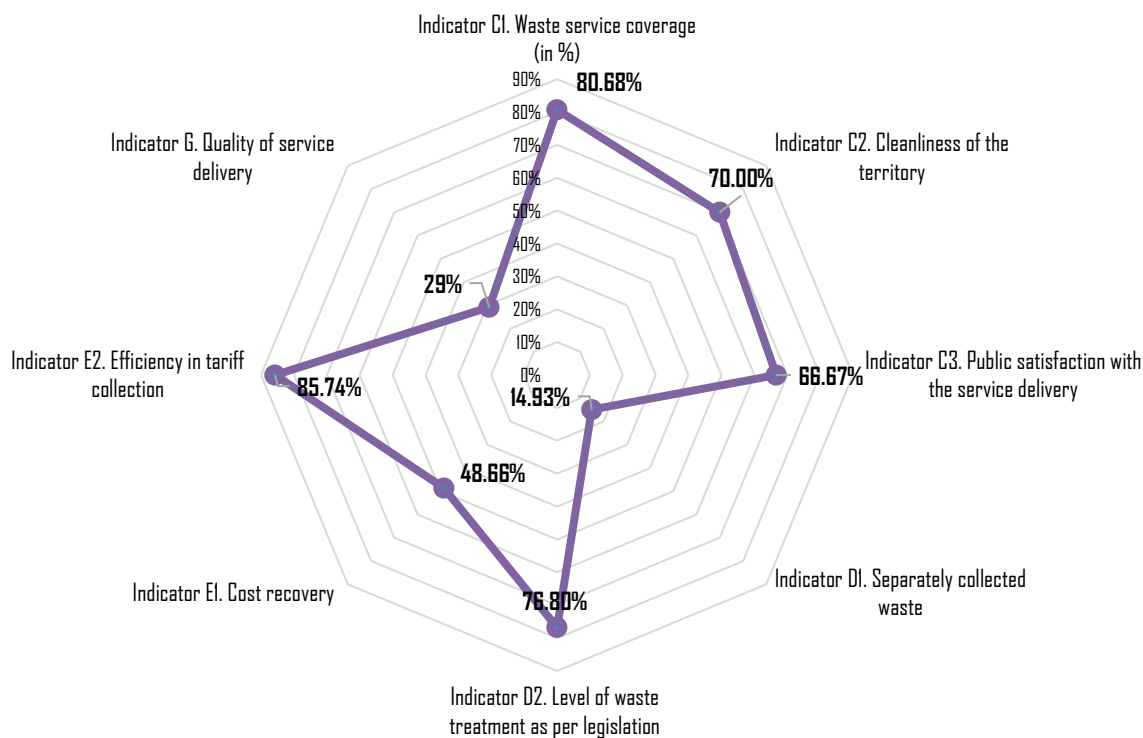
KPI 2023



Local Integrated Waste Management Plan of Roskovec Municipality

KPI 2024			
C - Cilësia e shërbimit	Indikatori C1. Mbulimi i zonës me shërbim (në %)	Indicator C1. Waste service coverage (in %)	Vlerësimi 80.68%
	Indikatori 1. Zona Urbane - Mbulimi i zonës me shërbim	Sub-Indicator 1. Urban area – Service coverage	91.30%
	Indikatori 1. Zona Rurale - Mbulimi i zonës me shërbim	Sub-Indicator 1. Rural area – Service coverage	69.05%
	Indikatori C2. Cilësia e pastrimit	Indicator C2. Cleanliness of the territory	70.00%
	Indikatori C3. Kënaqësia e publikut	Indicator C3. Public satisfaction with the service delivery	66.67%
D - Qendrueshmëria mjedisore	Indikatori D1. Shkalla e grumbullimit të diferencuar të mbetjeve	Indicator D1. Separately collected waste	14.93%
	Indikatori D2. Shkalla e trajtimit të mbetjeve në përputhje me legjislacionin	Indicator D2. Level of waste treatment as per legislation	76.80%
E - Qendrueshmëria financiare	Indikatori E1. Shkalla e rikuperimit të kostos	Indicator E1. Cost recovery	48.66%
	Indikatori E2. Eficienca në mbledhjen e tarifave	Indicator E2. Efficiency in tariff collection	85.74%
NJESI	Indikatori kosto njesi per ton	Indicator: Cost/ton	476.5
	Indikatori kosto njesi per banor	Indicator: Cost/Capita	79.3

KPI 2024



3. LOCAL INTEGRATED WASTE MANAGEMENT PLANNING

3.1 Vision

The vision of the local waste management plan of the Municipality of Roskovec has been formulated through a continuous process of discussion and consultation among stakeholders directly involved in the preparation of the plan, the analysis of the existing service delivery situation based on performance indicators, and the proposal of short- and medium-term objectives derived from this analysis.

Ultimately, taking into account the current status of waste management, the assessment of performance indicators, the overall and specific priorities within the framework of the new administrative division, as well as expectations for the development of this sector, civic values and norms, and the need for change, it was agreed that the municipal vision shall be as follows:

The Municipality of Roskovec, committed to sustainable environmental development, promotes a circular economy for waste through the implementation of source separation schemes and the application of composting and recycling practices.

2.2 OBJECTIVES

The Strategic Policy Document and the National Integrated Waste Management Plan 2020–2035 (Waste Strategy, approved in May 2020) set out a methodology based on municipal priorities for waste management, in order to define the minimum service standard, as provided for under the Law on Local Self-Government (No. 139/2015) in relation to waste management services. This methodology proposes a four-tier framework, ranging from the most basic to the most optimal level, which defines the minimum standard of waste management service provision:

- i. Coverage of 100% of the urban area with waste collection and transport services
- ii. Disposal of waste in a controlled disposal site, duly licensed by the National Environment Agency (NEA), or in an engineered facility
- iii. Coverage of 90% of the rural area of the municipality with waste collection and transport services
- iv. Source separation and recycling of waste
- v. Inclusion of the municipality in the forthcoming Extended Producer Responsibility (EPR) schemes (2025 onwards)

In defining the objectives of the five-year plan, and following consultations with the municipality, it was agreed that the objectives shall be defined on the basis of service performance assessment through indicators, with the aim of developing scenarios to achieve the minimum service provision standard.

Local Integrated Waste Management Plan of Roskovec Municipality

In addition, beyond the provisions of the Strategy, and based on the Waste Master Plan for the Fier region, of which the Municipality of Roskovec forms part, a feasibility study has also been prepared for this area.

Local Integrated Waste Management Plan of Roskovec Municipality

PERFORMANCE INDICATORS ROSKOVEC MUNICIPALITY		Municipality TOTAL EXISTING SITUATION 2023	Municipality TOTAL EXISTING SITUATION 2024	Municipal objectives during the implementation of the 5-year plan 2025–2030	Time Frame
Quality of the services	C1 Coverage of the service area (municipal data)	80.1%	80.7%	Coverage of the entire municipal territory with waste collection and transport services, and consolidation of the service in areas where it is currently provided <ul style="list-style-type: none"> • Extension of the service to 100% of the urban area in the city of Roskovec • Improvement and expansion of infrastructure for 1.1 m³ container-based waste collection and efficient transport of waste across the entire territory of Roskovec Municipality, including rural areas, up to the final treatment point at the Energy Recovery Plant in Fier 	2025 – 2030
	C2 Cleaning of the municipality	60%	70%	<ul style="list-style-type: none"> • Ensuring cleanliness at waste collection points (avoiding overflowing containers)” • Ensuring regular cleaning of city streets and urban areas from litter” • Reducing illegal dumping of municipal and inert waste within Roskovec Municipality” • Establishment of a field monitoring system for service delivery” • The monitoring system established by the municipality will ensure that illegal waste dumping is not allowed 	2025
	C3 level of public perception	100%	66.7%	<ul style="list-style-type: none"> • Establishment of a communication and partnership system with the community to ensure continuous access to waste management services” • Installation of a reception area at the municipality for the community to submit complaints regarding the level of service provided” • Establishment of an electronic system for the regular recording of data on citizen complaints and how many of them have been resolved by the municipality 	2025 – 2027
Environmental sustainability	D1 Level of separate waste collection	14.1%	14.9%	<ul style="list-style-type: none"> • Promotion of waste separation and minimization at source and at all stages of waste generation • Promotion of separate treatment of organic waste, mainly from gardens and agricultural farms, by implementing source-separation schemes in pilot areas within the municipality • Purchase and distribution of 1,300 bins in a pilot area for households with yards for source separation of organic waste • Development of recycling activities to initiate waste reduction, with the objective that by the end of the 5-year plan the municipality will divert up to 10% of recyclable waste from the main waste stream • Raising awareness among the community and businesses to become part of municipal initiatives for keeping the territory clean and applying innovative waste minimization schemes • Proper operation and functioning of the collection center for recyclable and compostable waste, which has been established and is operational 	2025 – 2030
	D2 Rate of waste treatment in sanitary facilities	62.5%	76.8%	<ul style="list-style-type: none"> • Ngritja e një sistemi monitorimi dhe përforcimi i tij për të siguruar që të gjitha mbetjet që grumbullohen në territorin e Bashkisë Roskovec shkojnë në Impiantin me Trajtim Energjie në Fier 	2025 – 2030
Economic	E1 Cost coverage	36.4%	48.7%	<ul style="list-style-type: none"> • Establishment and strengthening of a monitoring system to ensure that all waste collected in the territory of Roskovec Municipality is sent to the Energy Recovery Plant in Fier 	2025 – 2030

Local Integrated Waste Management Plan of Roskovec Municipality

	<i>E2 Level of Revenue collection rate</i>	77.8%	85.7%	<ul style="list-style-type: none"> • Development of a strategy to increase revenue from fees across all administrative units • Achieving 100% waste fee collection over the 5-year period • Informing citizens about the cleaning services covered by the fee • Implementation of awareness campaigns regarding waste fee payments and progressive increases based on improvements and expansion of waste services 	2025 – 2030
	<i>E2.1 Costs per unit (lek/ton)</i>	11481.86	476.54		
	<i>E2.2 Costs per inhabitants (lek/banorë)</i>	1316.04	79.34		

2.1.2 Waste Streams and Scope of the Plan

In accordance with the applicable legislation, this plan shall focus on the municipal (urban) waste stream for which the Municipality of Roskovec is directly or partially responsible.

Based on their composition and management approach, municipal waste shall be classified as follows:

- Urban waste (household waste, food waste, plant-based waste, recyclable waste, biodegradable waste, etc.), and
- Special municipal waste (construction and demolition waste, bulky waste, waste electrical and electronic equipment, furniture waste, etc.), generated by households or commercial entities.

Based on the source of generation, municipal waste is further classified into two main streams:

- Waste generated by households (HHW)
- Waste generated by businesses and industries (BW), where the composition of waste does not differ from the characteristics of municipal waste.

Meanwhile, other waste streams are classified as bulky waste, construction and demolition waste (inert waste), and green/garden waste generated at household level, referred to as “special waste”, for which the local authority is required to provide, either independently or in cooperation, appropriate collection and transport solutions, although their removal remains the direct responsibility of the waste generator.

2.1.3 Waste Management Area (WMA) and Service Beneficiaries

In order to ensure improved service organization and system efficiency, the waste management area within the municipal boundaries shall be subdivided into waste sub-zones with differences in urban typology, road infrastructure, and customer type. Accordingly, the waste area is divided into the following sub-zones:

1. Sub-zone 1: This sub-zone includes areas with high population density and areas with similar urban characteristics. In accordance with the methodology of Council of Ministers Decision No. 319/2018 on waste cost and tariff calculation, waste collection and transport services in this zone shall be provided daily (7 days per week). Waste collection points (WCPs) shall be distributed uniformly, primarily at intervals of 50–100 meters. In the case of the Municipality of Roskovec, the urban area of Roskovec is classified as a fully urban zone.
2. Sub-zone 2: This sub-zone includes areas with sub-urban and rural characteristics within the Municipality of Roskovec. Specifically, this zone includes the Administrative Units of Strumë, Kuman, and Kurjan. In these areas, the distance

between waste collection points may range from 150–200 meters, or door-to-door collection may also be applied in individual households.

2.2 Waste Management Services

Within this five-year plan, the Municipality of Roskovec foresees three main waste management services, namely:

- i) Cleaning, collection, and transport of mixed municipal waste;
 - ii) Waste treatment at the Energy Recovery Facility in Fier;
 - iii) Source separation and separate treatment of waste, including recycling and composting.
-

2.2.1 Street Cleaning Services

The organization of street cleaning services takes into account the need for cleaning roads and the level of daily pollution from waste, or within a defined period of days. For this purpose, the proposed cleaning frequencies for each road category shall be subject to continuous assessment until their final determination within potential technical specifications, should this service be outsourced in the future.

An essential element in the organization of street cleaning services is the classification of roads according to their importance, as follows:

1. Category I: (main roads and commercial streets) requires daily sweeping services. Mechanical cleaning of main roads using technological vehicles is preferred where feasible and effective, along with their daily maintenance, installation and emptying of street bins, and washing services during the summer period, which may be combined with mechanical sweeping and washing operations.
 2. Category II: (main roads with low commercial activity and low pedestrian density) requires manual sweeping to be carried out on a daily basis.
 3. Category III: (peripheral road networks in low-density urban areas or areas with inadequate infrastructure and unpaved roads) requires monthly cleaning services (sweeping or simple collection of waste and litter).
-

2.2.2 Collection and Transport of Mixed Municipal Waste

In planning collection and transport services, emphasis is also placed on the principle of pollution prevention. The quality and cost of waste collection and removal services are directly linked to how consumers dispose of waste, use waste collection points (WCPs), comply with designated schedules, and adhere to local waste management regulations. In this regard, the municipality must strengthen its regulatory framework through:

Local Integrated Waste Management Plan of Roskovec Municipality

- Development or revision of a local waste management regulation, defining procedures, operational protocols, contingency and accident response measures, rights and obligations of all stakeholders involved in waste management, as well as applicable penalties in case of violations. As a prerequisite, the municipality shall establish a working group responsible for monitoring and enforcement of these rules.
- Prevention of illegal dumping and disposal of waste outside containers, emphasizing the importance of awareness-raising campaigns and educational programs.
- Agreements with large waste generators to define responsibilities and obligations of each party, including the establishment of specific days and hours for waste delivery to designated municipal points, or municipal collection from generation sites under separate contractual arrangements.

Other elements to be considered in service planning include:

- i. Effective and appropriate working schedules;
- ii. Adequate number of containers;
- iii. Efficient waste collection routing;
- iv. Productivity improvement measures;
- v. Proper maintenance of equipment and vehicles.

Technical Aspects

The Municipality of Roskovec is committed to improving the current situation and establishing a sustainable basis for waste minimization initiatives.

Municipal waste remains the direct responsibility of the municipality, while other waste streams must be managed under Extended Producer Responsibility (EPR) principles.

Waste Collection and Transport Infrastructure

Infrastructure planning includes containers and waste collection vehicles, with suitable technologies (10-ton, 12-ton, and 4-ton trucks) depending on territorial conditions, including door-to-door collection in narrow-access areas.

2.2.3 Waste Treatment at the Energy Recovery Facility in Fier

Since November 2021, the Municipality of Roskovec has disposed of waste at the Energy Recovery Facility in Fier. The applicable gate fee is €10/ton for landfill disposal and €25–30/ton for incineration treatment.

2.2.4 Source Separation and Recycling

The Strategy sets targets for recycling and composting up to 2035, including packaging waste recovery and biodegradable waste reduction. Despite limited experience, the municipality is developing pilot source separation schemes, including a Recycling and Composting Center in Marinžë (operational since September 2022).

The system consists of primary and secondary separation, with a proposed two-bin system (wet and dry waste) for households and businesses.

Color coding:

- Blue: recyclable waste
- Green/brown: organic waste
- Grey/black: mixed waste



This container configuration may be applied in businesses or public institutions, such as schools, as well as in individual households in rural areas of the administrative units of the Municipality of Roskovec. The decision on the colour coding and the types of waste assigned to the respective bins may be reviewed and formally established through a specific municipal order, once the necessary technical and human capacities are in place.

Secondary system: Shared waste separation scheme (recycling centres): The use of the existing municipal waste collection system serves as a basis for the implementation and introduction of a differentiated waste collection system. This approach is only feasible when citizens and businesses are familiar with such a system and are able to adapt accordingly. This method is primarily preferred in large urban areas, where the establishment of individual waste separation systems is not feasible and where housing blocks are of a collective nature.

The informal sector (non-formalised collectors) plays an important role in the recovery of recyclable materials. This sector provides several benefits to the waste management system,

including: (i) reducing the amount of waste disposed of in landfills or disposal sites by an average of 15–30%; (ii) reducing the cost of waste collection and transport services; (iii) serving as a source of income for approximately 2% of the population in low-income areas; (iv) according to international literature, each ton of recycled waste collected is equivalent to one job opportunity.

As with the waste management hierarchy, the management of recyclable waste should also be based on a similar hierarchy, where the primary objective is the maximum possible prevention of waste generation:

- i. Reuse of recyclable waste (highest priority)
- ii. Collection of recyclable waste from traders
- iii. Formal waste collectors
- iv. Initial waste collectors
- v. Informal waste collectors (lowest priority)

The Municipality of Roskovec is a beneficiary of support from the Government of Germany, implemented by GIZ Albania, and through this assistance has constructed the Recycling and Composting Recovery Centre in Marinzë. The facility is scheduled to commence operations in autumn 2022 and will process recyclable waste from the source separation scheme installed in the city centre, as well as composting activities, where the initial feedstock will primarily come from agricultural farms.

2.2 Management of bulky and construction waste

In accordance with the applicable legal framework on waste management (Council of Ministers Decision No. 575, dated 24.06.2015 “On the approval of requirements for inert waste management”), the responsibility for the removal and transport of inert waste (construction and demolition waste), construction waste, or bulky waste generated from any activity lies with the producer (household, business, or industry), who must transport such waste to the locations designated by the municipality for this purpose.

Meanwhile, based on the Feasibility Study for the Fier waste management area, which has already been completed, it is foreseen that for the Municipality of Roskovec, inert and bulky waste will be disposed of at the former waste disposal site in Marinzë, which, according to the study conducted by the Ministry of Tourism and Environment, is to be rehabilitated.

3. PROPOSED SERVICE ORGANISATION OPTIONS

The options for the organisation of the waste management service have been developed on the basis of the recommendations of the Policy Document and the National Waste Management Plan (National Waste Strategy), approved in May 2020, whereby all municipalities in the country are required to provide waste management services in accordance with standards defined by the applicable legislation and official policy documents.

For the next five-year planning period, the Municipality of Roskovec will propose two scenarios for the provision of waste management services, in line with the requirements of the national legal framework. Both scenarios will be subject to technical and financial analysis, based on the cost calculation guidelines approved under Council of Ministers Decision No. 319/2018, and will be compared against a baseline scenario without source separation. Based on this analysis, the Municipality will determine which option will be considered for further implementation, followed by appropriate monitoring.

Table 17: Proposed scenarios for the provision of waste management services in the Municipality of Roskovec for the two-year period (the Municipality is expected to subsequently become part of the EPR scheme)

SCENARIO 1 – ACHIEVABLE	SCENARIO 1 – AMBITIOUS
Increase of waste fee collection rate to 100% in urban areas and 90% in rural areas	Increase of waste fee collection rate to 100% in urban areas and 90% in rural areas
Establishment of a scheme for the collection and treatment of up to 10% of green, agricultural, and organic waste. Establishment of a composting facility and a materials recovery facility by the end of the five-year implementation period of the plan.	Establishment of a scheme for the collection and treatment of up to 20% of green, agricultural, and organic waste. Establishment of a composting facility and a materials recovery facility by the end of the five-year implementation period of the plan.
Establishment of a scheme for the collection and treatment of up to 10% of recyclable materials (cardboard, paper, PET, and aluminium cans). Establishment of a composting facility and a materials recovery facility by the end of the five-year implementation period of the plan.	Establishment of a scheme for the collection and treatment of up to 30% of recyclable materials (cardboard, paper, PET, and aluminium cans). Establishment of a composting facility and a materials recovery facility by the end of the five-year implementation period of the plan.

2.1.2 Presentation of Waste Management Service Organization Scenarios

Given that the Municipality of Roskovec, since September 2020, has been one of the municipalities supported by the GIZ project, continuous efforts have been undertaken throughout this period to prepare the groundwork for the introduction of source separation schemes. The concept for the construction and operation of a composting and recyclable materials recovery facility has already materialized into a concrete investment in Marinzë. As the facility is expected to become operational shortly, it has been decided that during the first five years of plan implementation, organic waste will be collected from the agricultural facilities in the area, with the perspective that in the future, households living in individual dwellings will also begin to supply organic waste to the composting facility.

In parallel, based on the above-defined percentages for separate collection of recyclable waste, the municipality has estimated the potential number of households to initiate a pilot scheme and has mapped the relevant businesses and institutions that are expected to be included in the pilot scheme by the end of the five-year implementation period of the plan.



Figure 14 Composting and Recyclable Materials Recovery Facility in Marinzë

This facility is designed to process green and agricultural materials (potential waste streams) from the rural areas of Roskovec as primary input, which are highly suitable for compost production. Processing will be carried out using the windrow system, with an estimated annual production of approximately 300 m³ of high-quality compost.

The site will also be equipped with a baler for the compaction of cardboard and PET materials collected through the separate collection scheme in the town of Roskovec, with an estimated potential of approximately 20 tons of recyclable materials available for sale.

Roskovec Municipality Waste Source Separation Facilities

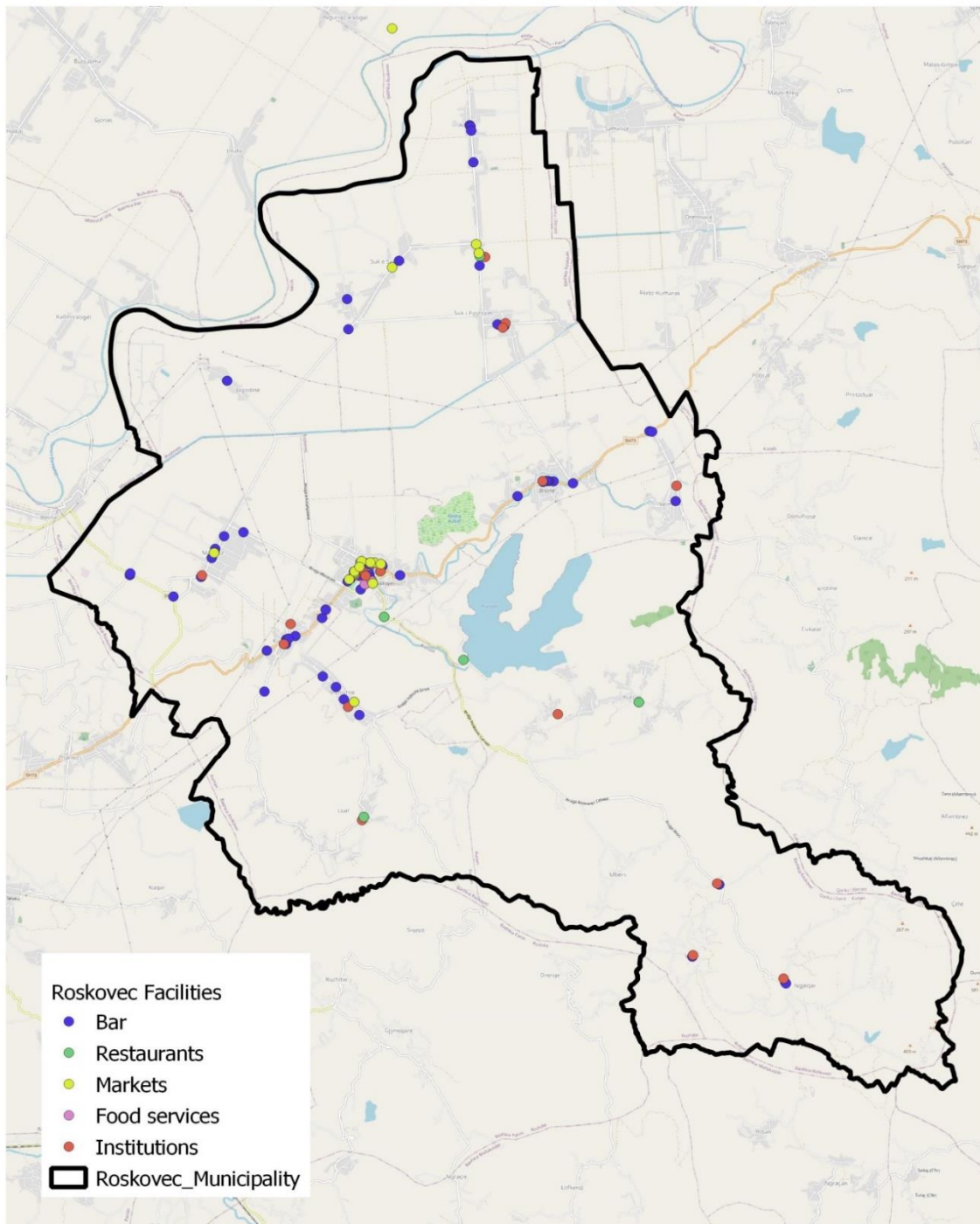


Figure 15 Map of Businesses in the Municipality of Roskovec
(Source: Eduard Cani)

Local Integrated Waste Management Plan of Roskovec Municipality

Scenario I – projection of organic and recyclable materials to be diverted from the main waste stream

General Data	Units	2022	2023	2024	2025	2026	2027
Population number	no.	25,048	25,048	21,323	21,323	21,323	21,323
Daily waste generation quantity	ton/day	8	8	6.8	6.8	6.8	6.8
Annual waste generation quantity	ton/year	2,920	2,920	2,482	2,482	2,482	2,482
Percentage of green, organic, and agricultural waste	%	72%	72%	72%	72%	72%	172%
Quantity of green, organic, and agricultural waste	ton/year	2,102	2,102	1,787	1,787	1,787	4,269
Percentage of recyclable waste	%	15%	15%	15%	15%	15%	15%
Quantity of recyclable waste	ton/year	438	438	372.3	372.3	372.3	372.3

Scenario 1 – details	Units	2022	2023	2024	2025	2026	2027
Percentage of green, organic, and agricultural waste to be diverted	%	2%	3%	5%	7%	10%	13%
Quantity of green, organic, and agricultural waste to be diverted	ton/year	58	88	146	204	292	380
Generation rate for green, organic, and agricultural waste Population number	kg/Inh/day	0.432	0.432	0.432	0.432	0.432	0.432
Potential number of households	no	370	556	926	1,296	1,852	2,408
No. Potential of families	no	100	150	250	350	501	652
%Percentage of recyclable waste to be diverted	%	2%	3%	5%	7%	10%	13%
Quantity of recyclable waste to be diverted	ton/year	58	88	146	204	292	380
Generation rate for recyclable waste	kg/ban/day	0.09	0.09	0.09	0.09	0.09	0.09
Population number	nr.	1,778	2,667	4,444	6,222	8,889	11,556
Potential number of households	nr.	480	721	1,201	1,682	2,402	3,122

Scenario II – projection of organic and recyclable materials to be diverted from the main waste stream

Overall information data	units	2022	2023	2024	2025	2026	2027
No. of population	no.	25,048	25,048	21,323	21,323	21,323	21,323
Daily quantity of waste	ton/day	8	8	6.8	6.8	6.8	6.8
Yearly quantity of waste	ton/year	2,920	2,920	2,482	2,482	2,482	2,482
% of green, organic and agricultural waste	%	72%	72%	72%	72%	72%	172%
Quantity of green, organic and agricultural waste	ton/year	2,102	2,102	1,787	1,787	1,787	4,269
% of recyclable waste	%	15%	15%	15%	15%	15%	15%
Quantity of recyclable waste	ton/year	438	438	372.3	372.3	372.3	372.3

Scenario 1 – details	units	2022	2023	2024	2025	2026	2027
----------------------	-------	------	------	------	------	------	------

Local Integrated Waste Management Plan of Roskovec Municipality

% of green, organic and agricultural waste to be diverted	%	5%	8%	13%	18%	20%	22%
Quantity of green, organic and agricultural waste to be diverted	ton/year	146	234	380	526	584	642
Generation rate of green, organic and agricultural waste	kg/inhabitants/day	0.432	0.432	0.432	0.432	0.432	0.432
No. of inhabitants	nr.	338	541	879	1,217	1,352	1,487
Nr. potencial i familjeve	nr.	91	146	237	329	365	401
% Quantity of recyclable waste to be diverted	%	10%	15%	20%	25%	30%	35%
Quantity of recyclable waste to be diverted	ton/vit	292	438	584	730	876	1022
Generation rate of recyclable waste	kg/inhabitants/day	0.09	0.09	0.09	0.09	0.09	0.09
No. of inhabitants	no.	3,244	4,867	6,489	8,111	9,733	11,355
No. of potential families	No.	877	1,315	1,754	2,192	2,631	3,070

Based on these calculations, the amount of waste that should potentially be reduced from the main waste stream for each of the scenarios is presented in the graphs below:

The planning carried out regarding the quantity of recyclable and organic waste that should potentially be removed from the waste stream over the 5 years of plan implementation has taken into consideration the fact that, in this municipality, the practice of waste separation at source is not currently applied and has not been applied previously. Under these conditions, for both scenarios, the municipality will apply low targets in the initial years of plan implementation for the quantity of recyclable and organic waste to be removed from the waste stream (2% for the first scenario and 5%/10% for the second scenario), gradually increasing to higher targets by the end of the fifth year (10% for the first scenario and 20%/30% for the second scenario).

From the graphs, it is understood that if the first scenario is applied, by the end of the 5-year period, the municipality will be able to reduce up to 10% of the recyclable waste it generates and 10% of organic waste, amounting to 584 tons of waste in the fifth year. The same applies if the second scenario is implemented, where in the fifth year the municipality will be able to remove 1,460 tons of waste from the main waste stream.

2.1.3 2.2 Calculation of Service Costs for the Proposed Service Organization Scenarios

Both scenarios will be financially analyzed for two cases of final waste treatment:

A – The entry fee for waste disposal at the Fier landfill – approximately proposed at 10 euro/ton = 1,300 ALL/ton.

B – The entry fee for waste disposal at the waste-to-energy treatment plant in Fier – approximately proposed at 25–30 euro/ton = 3,500 ALL/ton.

Local Integrated Waste Management Plan of Roskovec Municipality

Considering that the cleaning service is a composite service consisting of waste collection, transport, final treatment, as well as street sweeping and washing, the financial analyses of the scenarios will take into account the calculated costs for street sweeping and washing. These are not included in the guideline approved by Council of Ministers Decision No. 319/2018, as shown in the table below (details of the cleaning service costs calculated by the Municipality are provided in Annex I):

Table 18 – Annual Costs for Street Sweeping and Cleaning

Costs	LEK/vit
Cost of manual street sweeping	10,019,374
Cost of street washing	1,468,089
Total cost for street sweeping and washing	11,487,463

According to these calculations, and taking into account that the service is provided 312 days per year over a daily area of 251,625 m², the unit cost for manual street sweeping is calculated at 0.127 ALL/m². Meanwhile, for the street washing service, which is provided 153 days per year over a daily area of 73,000 m², the unit cost is calculated at 0.131 ALL/m².

Description of the baseline scenario as the service is currently provided in the Municipality of Roskovec

Description	<ul style="list-style-type: none"> <input type="checkbox"/> The collection and transport of mixed municipal solid waste will be carried out in 100% of the urban area and in 90% of the rural area. <input type="checkbox"/> The disposal of mixed municipal solid waste will take place at the sanitary landfill in Fier. <input type="checkbox"/> No gate fee is paid from the municipal budget.
Technical data	<ul style="list-style-type: none"> • Waste area: urban (Roskovec city) and rural (all Administrative Units) • Population based on MFE formula – 25,048 inhabitants • Waste generation rate – 0.257 kg/inhabitant/day • Distance to the Waste-to-Energy Plant in Fier – 25 km one way • Waste collection distances: urban area (20 km), rural area (87 km) • Waste collection vehicle capacity: 10 tons (urban area), 7 tons (rural area) • Waste collection frequency: 6 days per week (urban area); 4 days per week (rural area) • Annual waste quantity = 2,180 tons/year (7.8 tons/day) • Number of containers: 106 containers of 1.1 m³

Table 19 – Cost of the current baseline scenario

Main Scenario		
Roskovec city	<input type="checkbox"/> Operational and administrative costs	12,381,980.00 Lekë
Rural area	<input type="checkbox"/> Operational and administrative costs	7,480,790.27 Lekë
	<input type="checkbox"/> Manual street sweeping and washing	11,487,463.00 Lekë

Local Integrated Waste Management Plan of Roskovec Municipality

	□ Total operational cost	31,350,233.27 Lekë
Roskovec city	□ Investment cost (bins + truck)	8,987,584 Lekë
Rural area	□ Investment cost (bins + truck)	7,268,624 Lekë
	Total costs of investment	16,256,208 Lekë
Roskovec municipality	Total Costs	47,606,441.25 Lekë

Scenario I – Waste is disposed of at a landfill / waste-to-energy plant, and recyclable and organic waste must be reduced to 10% by the end of the 5-year plan period.

Description	<ul style="list-style-type: none"> • The collection and transport of mixed municipal solid waste will be carried out across 100% of the urban territory and 90% of the rural territory. • Source separation of 10% organic waste and 10% recyclable waste. • Disposal of mixed municipal solid waste at the waste-to-energy plant in Fier. • Treatment of organic waste at the composting facility. • Treatment of recyclable waste at the recycling recovery centre. • The gate fee for waste disposal, to be paid from the municipal budget for landfill disposal, is 1,300 ALL/ton. • The gate fee for waste disposal, to be paid from the municipal budget for waste treatment, is 3,500 ALL/ton.
Technical data	<ul style="list-style-type: none"> □ Waste area: urban (Roskovec city) and rural (all Administrative Units); recyclable waste area (Roskovec city); composting area (rural areas within Administrative Units) and agricultural farms. □ Population based on MFE formula – 25,048 inhabitants. □ Waste generation rate for mixed waste – 0.257 kg/inhabitant/day. • Waste generation rate for recyclable waste (15% of mixed waste) = 0.1 kg/inhabitant/day. • Waste generation rate for organic waste (72% of mixed waste) = 0.157 kg/inhabitant/day. □ Distance to the Fier Waste-to-Energy Plant – 25 km one way. □ Distance to the composting and material recovery facility – 4.5 km one way. □ Waste collection distances: urban area (20 km), rural area (87 km). □ Types of waste collection vehicles: 10-ton (urban area), 7-ton (rural area), 3-ton (recyclable waste). □ Waste transport frequency: 6 days per week (urban area); 4 days per week (rural area); 2 days per week (recyclable waste); 4 days per week (residual waste).

Annex I provides the detailed calculated costs for the first proposed service organization scenario, as calculated in accordance with the requirements of Council of Ministers Decision No. 319/2018. The table below presents a summary of costs under the existing situation. During the 5-year implementation period of the plan, the total service cost is expected to increase by 11.72%–17.91% compared to the current baseline, if waste is disposed of at a landfill subject to a gate fee. If waste is treated at an incineration (waste-to-energy) facility subject to a gate fee, the service cost is expected to increase by 18.66%–21.14% compared to the current baseline cost.

Table 20 – Cost Comparison for Scenario I

Local Integrated Waste Management Plan of Roskovec Municipality

Total costs	Current situation	I – landfill fee only	I – incineration plant fee	% cost increase from landfill fee	cost increase from incineration plant fee
2022	47,606,441 Lekë	53,925,416 Lekë	58,526,632 Lekë	11.72%	18.66%
2023	47,606,441 Lekë	54,328,460 Lekë	58,699,674 Lekë	12.37%	18.90%
2024	47,606,441 Lekë	55,129,490 Lekë	59,041,312 Lekë	13.65%	19.37%
2025	47,606,441 Lekë	55,933,228 Lekë	59,385,440 Lekë	14.89%	19.83%
2026	47,606,441 Lekë	57,409,078 Lekë	60,171,679 Lekë	17.08%	20.88%
2027	47,606,441 Lekë	57,409,078 Lekë	60,171,679 Lekë	17.91%	21.14%

2.2 Economic Benefit Potential from the Implementation of Source Separation Schemes

Within the framework of the proposed scenarios for the source separation of recyclable waste and the composting of organic waste, as part of the implementation of the national waste strategy, the applicable legal framework, and the obligations arising from the implementation of European Union directives for accelerated accession, the section below presents the potential quantity of waste that can be diverted over the 5-year implementation period from final treatment at the Fier Plant, as well as the financial potential generated through the sale of recyclable materials and compost resulting from the implementation of source separation schemes:

Table 22 – Economic Benefit Potential from the Implementation of Scenario I of Source Separation Schemes

Skenari 1	Unit	2022	2023	2024	2025	2026	2027
% of recyclable waste diverted from the main waste stream	%	2%	3%	5%	7%	10%	11%
Quantity of recyclable waste diverted	ton/vit	58	88	146	204.4	292	333
Cartoon/paper	6%	3.7	5.5	9.2	12.9	18.4	20.98
Plastic	5%	2.9	4.4	7.3	10.2	14.6	16.64
Metal	1%	0.6	0.9	1.5	2	2.9	3.29

Scenario 1 – compost material	Njësia	2022	2023	2024	2025	2026	2027
% Organic waste sent for composting	%	2%	3%	5%	7%	10%	13%
Quantity of organic waste sent for composting	ton/vit	58	88	146	204.4	292	379.6
Price	lek/m ³	3,000	3,000	3,000	3,000	3,000	3,000
Revenue (bulk material) (ALL/year)	lek/year	174,000	264,000	438,000	613,200	876,000	1,138,800

Local Integrated Waste Management Plan of Roskovec Municipality

Table 23 – Economic benefit potential from the implementation of Scenario II of source separation schemes

Scenario 2 – recyclable material	Unit	2022	2023	2024	2025	2026	2027
Paper/ cardboard	ton/year	18.4	27.6	36.8	46	55.2	64.4
Price per unit	lek/kg	1.04	1.04	1.04	1.04	1.04	1.04
Value	lek/year	19,132	28,698	38,264	47,830	57,396	66,962
Plastic	ton/year	14.6	21.9	29.2	36.5	43.8	51.1
Price per unit	lek/kg	63	63	63	63	63	63
Benefit value	lek/year	919,800	1,379,700	1,839,600	2,299,500	2,759,400	3,219,300
Metal	ton/year	2.9	4.4	5.8	7.3	8.8	10.3
Price per unit	lek/kg	171	171	171	171	171	171
Benefit value	lek/year	499,320	748,980	998,640	1,248,300	1,497,960	1,747,620
Benefit value Total	Lek/year	1,438,252	2,157,378	2,876,504	3,595,630	4,314,756	5,033,882

Scenario 2 – recyclable material	Unit	2022	2023	2024	2025	2026	2027
Cardboard	ton/Year	18.4	27.6	36.8	46	55.2	64.4
Price per unit	lek/kg	1.04	1.04	1.04	1.04	1.04	1.04
Benefit value	lek/year	19,132	28,698	38,264	47,830	57,396	66,962
Plastic	ton/year	14.6	21.9	29.2	36.5	43.8	51.1
Price per unit	lek/kg	63	63	63	63	63	63
Benefit value	lek/year	919,800	1,379,700	1,839,600	2,299,500	2,759,400	3,219,300
Metal	Ton/year	2.9	4.4	5.8	7.3	8.8	10.3
Price per unit	lek/kg	171	171	171	171	171	171
Benefit value	lek/year	499,320	748,980	998,640	1,248,300	1,497,960	1,747,620
Benefit value Total	Lek/year	1,438,252	2,157,378	2,876,504	3,595,630	4,314,756	5,033,882

Scenario 2 – compost material	Unit	2022	2023	2024	2025	2026	2027
% of organic waste sent for composting	%	5%	8%	13%	18%	20%	22%
Quantity of organic waste sent for composting	ton/year	146	234	379.6	525.6	584	642.4
Price (bulk material)	lek/m ³	3,000	3,000	3,000	3,000	3,000	3,000
Benefit(bulk material) (lek/year)	lek/year	438,000	702,000	1,138,800	1,576,800	1,752,000	1,927,200

2.2 Management of Other Waste Streams

As also stated in the previous chapters, the municipality has a legal obligation to collect, transport, and ensure the final treatment of municipal waste generated by households and, primarily, small businesses producing similar waste types. However, regarding other waste streams, although they do not fall under the municipality's direct responsibility to manage, the municipality must nevertheless be informed about how these streams are managed and where they are directed for final treatment.

According to sectoral legislation, municipalities are legally required, in the case of construction and demolition waste, to designate a site where waste generators are obliged to deliver such waste.

Furthermore, pursuant to Council of Ministers Decision No. 687, dated 29.07.2015, "On the approval of rules for the maintenance, updating and publication of waste statistics," as amended by Decision No. 538, dated 22.09.2021, municipalities are also legally required to generate and report data on the following waste streams potentially generated within their territory:

1. Quantity of plastic waste (kg or tons/year) – 17 02 03 / 15 01 02 – plastic waste and plastic packaging waste
2. Quantity of glass waste (kg or tons/year) – 15 01 07 – glass packaging waste
3. Quantity of metal waste (kg or tons/year) – 17 04 07 / 15 01 04 – mixed metals and metal packaging waste
4. Quantity of wood waste (tons/m³) – 17 02 01 / 15 01 03 – wood and wood packaging waste
5. Quantity of paper and cardboard waste (kg or tons/year) – 15 01 01 / 03 03 08 – paper and cardboard packaging waste and waste from paper and cardboard sorting for recycling
6. Quantity of waste batteries (kg or tons/year) – 16 06 / 16 06 01* / 16 06 06* – lead batteries and separately collected electrolytes from batteries and accumulators
7. Quantity of end-of-life tyres (kg or tons/year) – 16 01 03 – waste tyres
8. Quantity of waste oils (kg or tons/year) – 12 01 06* / 12 01 10* – mineral machine oils containing halogens (excluding emulsions and solutions) and synthetic machine oils
9. Quantity of animal by-product waste (kg or tons/year) – 02 01 02 – animal tissue waste
10. Quantity of textile waste (kg or tons/year) – 04 / 15 01 09 – waste from leather, fur and textile industries and textile packaging waste
11. Quantity of electrical and electronic waste (kg or tons/year) – 16 02 / 20 01 36 – waste electrical and electronic equipment and end-of-life electrical and electronic devices (including fluorescent tubes and other mercury-containing waste, as well as discarded equipment containing chlorofluorocarbons)

Since the Municipality of Roskovec does not yet implement a separate collection system, the generation of such data remains particularly challenging, also considering that part of the waste streams listed above do not fall within the municipality's legal competence for management.

Nevertheless, the approaches that the municipality may apply for generating this data are grouped into three categories, which cannot be assessed with high precision but represent alternative options that the municipality may select and implement depending on its conditions and available financial and human resources:

A. All businesses operating within the municipality's territory and engaged in the production, processing, collection, or treatment of specific waste streams must report annually to the municipality, in accordance with applicable legislation. The municipality may issue specific information requests to all businesses to obtain relevant data.

B. The municipality may establish dedicated collection centres for specific waste streams, operated by private operators. In accordance with the legislation on specific waste streams, these operators are required to report annually to the municipality on the quantities of waste collected or treated. The municipality may also request data throughout the year from these operators.

C. The municipality may establish dedicated collection centres for specific waste streams operated directly by the municipality. In this case, the municipality must establish a monitoring and data management system for waste entering and leaving the facility, classified by specific categories. At such centres, the municipality or a private operator may also choose to recover materials or products from incoming waste streams.

2.2 2.3 Cost Recovery Policy and Waste Fee

The cost recovery policy refers to a system of fees and taxes designed specifically to cover part or all of the costs of providing waste management services, borne by service users in accordance with the "polluter pays" principle.

The advantages of a cost recovery system lie in the fact that all user categories are made aware of the full cost of the service, are more directly involved in issues related to service quality, better understand the weight of their fees in revenue generation, and gain clearer insight into municipalities' real capacity to provide the service.

The development of cost recovery policies is the responsibility of municipalities and aims to define the level of cost recovery to be achieved over a defined period, by first establishing:

- Calculation of the full cost of municipal solid waste management services;
- Municipal budget planning based on this cost;
- Definition of tariffs for different user categories based on the defined level of cost recovery;
- Implementation and monitoring procedures.

Specifically, municipalities, based on their own analysis, may identify their current position within the following options and define their desired target:

- Uncovered costs, when revenues are lower than direct operational expenditures;

Local Integrated Waste Management Plan of Roskovec Municipality

- Coverage of only direct operational and maintenance costs (O&M);
- Coverage of operational disposal and maintenance costs as well as loan interest costs incurred to improve the service;
- Coverage of O&M costs plus loan repayment and interest;
- Coverage of O&M, loan interest, depreciation costs, and long-term investment planning;
- Coverage of O&M, capital depreciation (capital costs and return on investment), and long-term investment planning (or long-run marginal cost);
- Coverage of long-run marginal costs plus environmental costs (externalities), potentially expressed through landfill disposal taxes.

However, in order to establish a sustainable and, above all, implementable cost recovery policy, municipalities require cooperation with the central level of policymaking. At the central level, service delivery standards should be developed to ensure a common understanding across all municipalities regarding service levels. Only in this way can standardized monitoring procedures and comparable service quality classes be established.

Furthermore, updated budgeting guidelines should be developed based on “budget or cost centres” for specific service components (collection, transport, recycling, awareness programmes, etc.). Only then will municipalities be able to fully understand the total cost of the service they provide

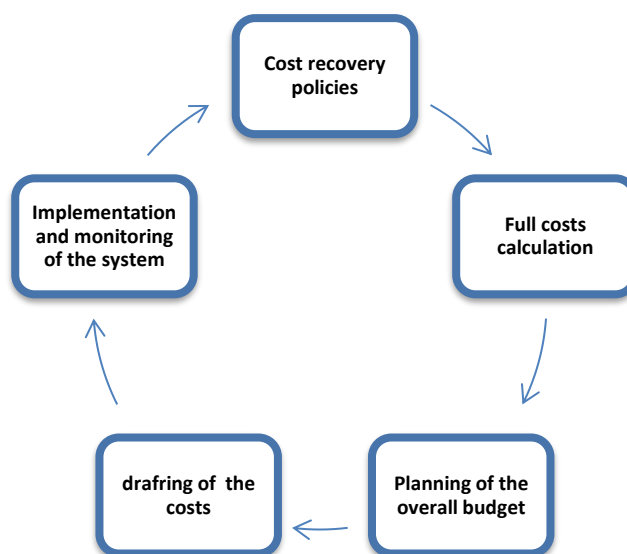


Figure 20 – Steps to be followed for the implementation of the cost recovery policy

Fee collection strategy: The foundations for the financial sustainability of waste services can be achieved through the provision of effective and cost-efficient services, as well as through the establishment of a sustainable financial system based on a fair and effective cost recovery policy. Financial aspects are essential for service delivery and sustainability.

Based on theoretical and practical findings regarding the fee collection strategy and the cost recovery policy, the figure below schematically presents the structure that should be

Local Integrated Waste Management Plan of Roskovec Municipality

established and consolidated by the municipality for fee collection and for increasing the collection rate.

:

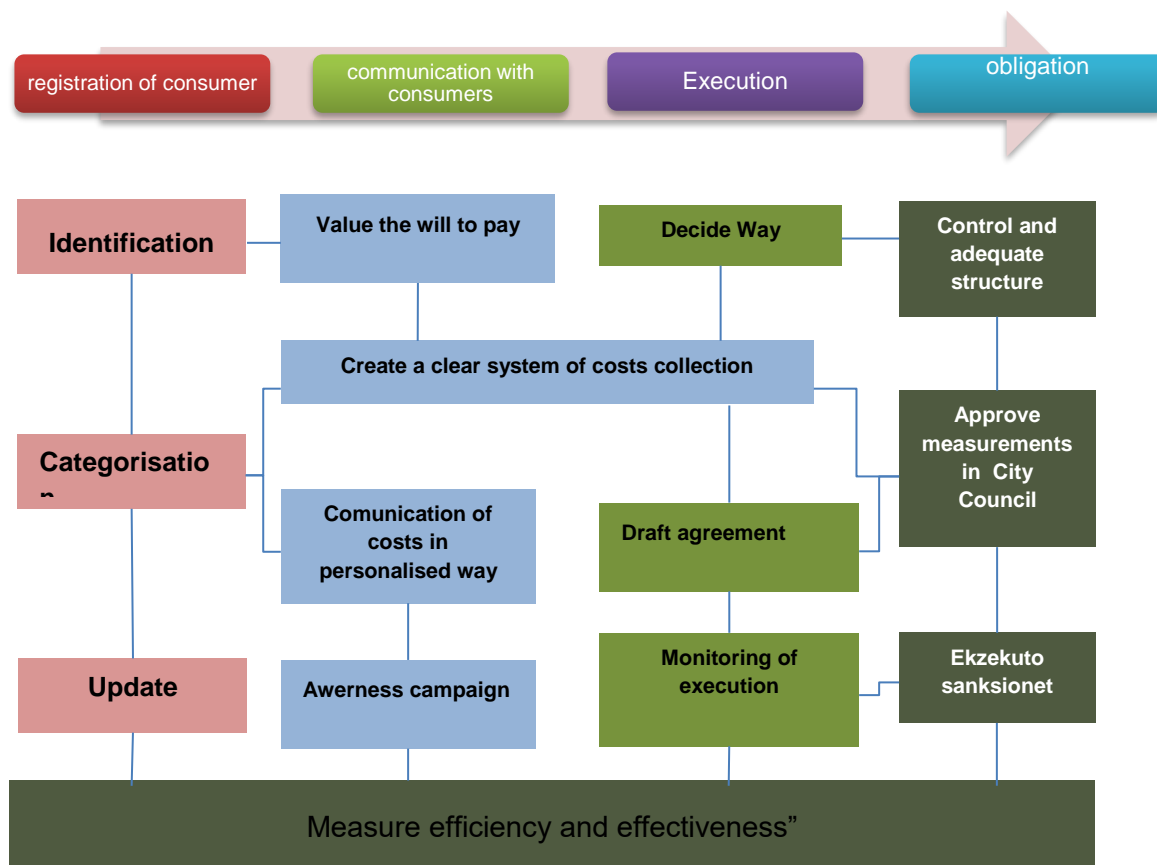


Figure 21 – Strategy for Fee Collection

- **Registration of consumers**, which is the first step, includes identifying all entities that benefit from the waste management service, categorizing them according to their characteristics (type, size, nature of the waste they generate, quantity, etc.), with the aim of establishing and maintaining an updated data system within municipal boundaries. This system should be regularly reviewed at least once a year to reflect all population movements as well as the registration of all new businesses.
- **Communication with consumers** benefiting from the service is another very important step in building an efficient fee collection system. This step aims at differentiating fees for different categories of waste management service users and linking the fee to the level of service quality. Gathering citizens' opinions through questionnaires regarding service quality not only helps identify problems, but also aims to assess willingness and ability to pay, contributing to the creation of a clear procedural system for fee setting and collection. Another important aspect of communication is ensuring transparency of fees through various communication channels (written and visual media, website, etc.).
- **Most local authorities** carry out the fee collection process themselves through their local tax offices or directorates of taxes and fees. Sometimes, waste fees are combined with other local taxes (such as property tax) within the same bill. To ensure system sustainability, it is important to design key mechanisms, starting from notification tools to raise consumer awareness about their obligation to pay, up to enforcement tools such as sanctions, fines, etc.
- **The final step**, though no less important, is enforcement, which includes establishing a system with adequate control structures that will design measures and sanctions in cases of non-payment. The creation of such structures with clear duties and responsibilities should be part of every local waste management plan. All measures and sanctions must be designed in accordance with national legislation and local waste management policies. For effective enforcement, these measures and sanctions must

Local Integrated Waste Management Plan of Roskovec Municipality

be approved by a Municipal Council Decision and communicated to all service users through various communication channels. The municipality should also undertake a strong awareness campaign for all consumers, especially residents, promoting the waste collection service, rules, and responsibilities.

2.2.1 Planning Revenues from Cleaning Fees According to Proposed Scenarios

The Municipality of Roskovec is engaged in updating its customer database (households and businesses) to improve the planning of local fees—not only cleaning fees—in order to better understand its fiscal potential to cover service costs. This process specifically requires initiative not only from the central administration of the Municipality of Roskovec, but also from all administrative units to register all clients in the municipal database.

From the analysis conducted regarding the fiscal policy that the municipality should follow to cope with increasing costs under all service organization scenarios presented above, the tables below provide revenue planning from households for both the first and second scenarios. This includes waste disposal in a landfill with an entry fee of 1,300 ALL/ton and disposal in the waste-to-energy treatment plant in Fier with an entry fee of 3,500 ALL/ton.

During the planning of revenues for the next five years, several elements have been taken into consideration, as follows:

- The number of households increases by 0.1% each year
- The fiscal burden of operation and maintenance costs for households is assumed at 55%

Table 25 – Revenue Planning – Scenario I – Landfill Fee

Household fee based on service operating cost (Zone 1 Roskovec) Scenario I_Landfill		2022	2023	2024	2025	2026	2027
1.1	No. of families	2,947	2,950	2,953	2,956	2,959	2,962
1.2	Annual household fee	1,800	1,800	1,800	1,900	2,000	2,100
1.3	Revenue planning from fees	5,304,600	5,309,905	5,315,215	5,616,115	5,917,611	6,219,107
1.4	Revenue collection rate	69%	75%	85%	95%	95%	95%
1.5	Collected revenues	3,660,174	3,982,428	4,517,932	5,335,309	5,621,731	5,908,153
1.6	Share of operating costs for households	6,027,742	6,004,294	5,960,773	5,929,534	5,894,895	5,860,256
1.7	Revenue planning from fees	61%	66%	76%	90%	95%	100%
Household fee based on service operating cost (Zone 2 Administrative Units – Strumë, Kuman, Kurjan) Scenario I_Landfill		2022	2023	2024	2025	2026	2027
1.1	No. of families	6,840	6,847	6,854	6,861	6,867	6,873
1.2	Annual household fee	1,000	1,000	1,000	1,200	1,500	1,800
1.3	Revenue planning from fees	6,840,000	6,846,840	6,853,687	8,232,649	10,301,102	12,369,555
1.4	Revenue collection rate	50%	65%	75%	85%	95%	100%
1.5	Incomes	3,420,000	4,450,446	5,140,265	6,997,751	9,786,047	12,574,343
1.6	Share of operating costs for households	13,990,415	13,935,992	13,834,981	13,762,474	13,682,077	13,601,680
1.7	Percentage of costs coverage	24%	32%	37%	51%	72%	93%

Local Integrated Waste Management Plan of Roskovec Municipality

Fee collection performance – Scenario I_Landfill		2022	2023	2024	2025	2026	2027
I	Total revenues collected from households in the municipality	7,080,174	8,432,874	9,658,197	12,333,060	15,407,777	18,482,494
II	Share of operating costs for households in total for the Municipality	20,018,156	19,940,286	19,795,754	19,692,008	19,576,972	19,461,936
III	Cost coverage percentage from households for the entire Municipality	35%	42%	49%	63%	79%	95%

Table 26 Revenue planning – Scenario I – incineration plant fee

Household fee based on service operating cost (Zone 1 Roskovec) Scenario I_WtEP		2022	2023	2024	2025	2026	2027
1.1	No. of families	2,947	2,950	2,953	2,956	2,956	2,956
1.2	Annual household fee	1,800	1,800	1,800	1,900	2,000	2,100
1.3	Revenue planning from fees	5,304,600	5,309,905	5,315,215	5,616,115	5,917,611	6,219,107
1.4	Revenue collection rate	69%	75%	85%	95%	95%	100%
1.5	Collected revenues	3,660,174	3,982,428	4,517,932	5,335,309	5,621,731	5,908,153
1.6	Share of operating costs for households	6,789,761	6,732,826	6,627,153	6,551,300	6,467,191	6,383,082
1.7	Cost coverage percentage	54%	59%	68%	81%	87%	93%
Household fee based on service operating cost (Zone 2 Administrative Units – Strumë, Kuman, Kurjan) Scenario I_WtEP		2022	2023	2024	2025	2026	2027
1.1	No. of families	6,840	6,847	6,854	6,861	6,867	6,873
1.2	Annual household fee	1,000	1,000	1,000	1,200	1,500	1,800
1.3	Revenue planning from fees	6,840,000	6,846,840	6,853,687	8,232,649	10,301,102	12,369,555
1.4	Revenue collection rate	50%	65%	75%	85%	95%	100%
1.5	Collected revenues	3,420,000	4,450,446	5,140,265	6,997,751	9,786,047	12,574,343
1.6	Share of operating costs for households	15,759,064	15,626,919	15,381,652	15,205,597	15,010,378	14,815,159
1.7	Cost coverage percentage	22%	28%	33%	46%	65%	84%

Fee collection performance Skenari I_WtEP		2022	2023	2024	2025	2026	2027
I	Total revenues collected from households in the municipality	7,080,174	8,432,874	9,658,197	12,333,060	15,407,777	18,482,494

Local Integrated Waste Management Plan of Roskovec Municipality

II	Share of operating costs for households in total for the Municipality	22,548,825	22,359,746	22,008,806	21,756,898	21,477,568	21,198,238
III	Cost coverage percentage from households for the entire Municipality	31%	38%	44%	57%	72%	87%

Table 27 Revenue planning – Scenario II – landfill fee

Household fee based on service operating cost (Zone 1 Roskovec) Scenario II_Landfill		2022	2023	2024	2025	2026	2027
1.1	No of families	2,947	2,950	2,953	2,956	2,959	2,962
1.2	Annual household fee	1,800	1,800	1,800	1,900	2,000	2,100
1.3	Revenue planning from fees	5,304,600	5,309,905	5,315,215	5,616,115	5,917,611	6,219,107
1.4	Revenue collection rate	69%	75%	85%	95%	95%	95%
1.5	Collected revenues	3,660,174	3,982,428	4,517,932	5,335,309	5,621,731	5,908,153
1.6	Share of operating costs for households	5,991,861	5,966,620	5,961,118	5,979,347	6,012,134	6,044,921
1.7	Cost coverage percentage	61%	67%	76%	89%	94%	99%
Household fee based on service operating cost (Zone 2 Administrative Units – Strumě, Kuman, Kurjan) Scenario II_Landfill		2022	2023	2024	2025	2026	2027
1.1	No of families	6,840	6,847	6,854	6,861	6,867	6,873
1.2	Annual household fee	1,000	1,000	1,000	1,200	1,500	1,800
1.3	Revenue planning from fees	6,840,000	6,846,840	6,853,687	8,232,649	10,301,102	12,369,555
1.4	Revenue collection rate	50%	65%	75%	85%	95%	100%
1.5	Collected revenues	3,420,000	4,450,446	5,140,265	6,997,751	9,786,047	12,574,343
1.6	Share of operating costs for households	13,907,136	13,848,550	13,835,782	13,878,092	13,954,189	14,030,286
1.7	Cost coverage percentage	25%	32%	37%	50%	70%	90%
Fee collection performance - Scenario II_Landfill		2022	2023	2024	2025	2026	2027
I	Total revenues collected from households in the municipality	7,080,174	8,432,874	9,658,197	12,333,060	15,407,777	18,482,494
II	Share of operating costs for households in total for the Municipality	19,898,997	19,815,170	19,796,900	19,857,439	19,966,323	20,075,207
III	Cost coverage percentage from households for the entire Municipality	36%	43%	49%	62%	77%	92%

Local Integrated Waste Management Plan of Roskovec Municipality

Table 28 Revenue planning – Scenario II – incineration plant fee

Household fee based on service operating cost (Area 1 Roskovec) Scenario II_ĚtEP							
	2022	2023	2024	2025	2026	2027	
1.1	No of families	2,947	2,950	2,953	2,956	2,959	2,962
1.2	Annual household fee	1,800	1,800	1,800	1,900	2,000	2,100
1.3	Revenue planning from fees	5,304,600	5,309,905	5,315,215	5,616,115	5,917,611	6,219,107
1.4	Revenue collection rate	69%	75%	85%	95%	95%	95%
1.5	Collected revenues	3,660,174	3,982,428	4,517,932	5,335,309	5,621,731	5,908,153
1.6	Share of operating costs for households	6,540,650	6,487,468	6,476,018	6,514,500	6,583,519	6,652,538
1.7	Cost coverage percentage	56%	61%	70%	82%	85%	88%
Household fee based on service operating cost (Zone 2 Administrative Units – Strumě, Kuman, Kurjan) Scenario II_ĚtEP							
	2022	2023	2024	2025	2026	2027	
1.1	No of families	6,840	6,847	6,854	6,861	6,867	6,873
1.2	Annual household fee	1,000	1,000	1,000	1,200	1,500	1,800
1.3	Revenue planning from fees	6,840,000	6,846,840	6,853,687	8,232,649	10,301,102	12,369,555
1.4	Revenue collection rate	50%	65%	75%	85%	95%	100%
1.5	Collected revenues	3,420,000	4,450,446	5,140,265	6,997,751	9,786,047	12,574,343
1.6	Share of operating costs for households	15,180,877	15,057,441	15,030,866	15,120,184	15,280,377	15,440,570
1.7	Cost coverage percentage	23%	30%	34%	46%	64%	82%

Fee collection performance - Scenario II_ĚtEP							
	2022	2023	2024	2025	2026	2027	
I	Total revenues collected from households in the municipality	7,080,174	8,432,874	9,658,197	12,333,060	15,407,777	18,482,494
II	Share of operating costs for households in total for the Municipality	21,721,527	21,544,909	21,506,884	21,634,684	21,863,897	22,093,110
III	Cost coverage percentage from households for the entire Municipality	33%	39%	45%	57%	70%	83%

3. PLANNING OF COMMUNITY AWARENESS AND INFORMATION CAMPAIGNS

In order to ensure the proper functioning of the waste management system, to enhance the efficiency and effectiveness of services, and to guarantee cleanliness within the municipal territory, the involvement and awareness of the community are essential. The community must not only understand how the system operates, but also actively support it. The success of any scheme depends entirely on the support of its users.

In order to ensure the effective implementation of the plan over the next five-year period, the municipality shall establish a partnership relationship with the community, whereby:

Local Integrated Waste Management Plan of Roskovec Municipality

- The community is provided with accessible channels to express opinions, complaints, and suggestions regarding waste management services (e.g. regular surveys conducted by the municipality, periodic announcements on municipal notice boards, official websites, and social media platforms);
- The community is regularly informed about the waste management scheme applied within the municipal territory;
- Transparency is ensured regarding the level of cleaning fees and the billing system for their collection;
- The community is informed about fiscal obligations related to the payment of the service fee, as well as other obligations linked to the applicable scheme and the responsible directorate.

Consumers, including households, businesses, and institutions, through a strong awareness-raising campaign, can significantly contribute to improving the waste collection system by complying with requirements for disposing of waste in designated locations. Public awareness regarding waste management, territorial cleanliness, and compliance with fiscal obligations is considered a priority and a primary objective, alongside other objectives related to infrastructure and the safe disposal of waste.

There are several cost-effective methods to increase public awareness on waste-related issues and to provide information on their proper management. This can be achieved through the development of a dedicated awareness plan, which shall enable:

- The provision of general and specific information to the community regarding local initiatives for waste collection, recycling, municipal cleanliness, and the cost of waste management services;
- Transparency with the community regarding the billing system and the level of cleaning fees;
- Raising awareness of the community on legal obligations for the payment of cleaning fees, as well as local rules and responsibilities;
- The promotion of environmentally friendly behavior.

Methods of Communication and Information

The most commonly used methods for disseminating information include brochures, newspaper articles, public notices, advertisements on local television and radio, and leaflets distributed in schools. In addition, the development of information technology and widespread internet access represent significant opportunities. These technologies, together with the extensive use of social media—particularly among younger populations—provide effective, low-cost, and rapid channels for public communication and information dissemination.

Furthermore, various public events (such as celebrations, gatherings, and concerts), where large numbers of people are present, may also be utilized as opportunities for effective communication and outreach.

Within community information programs related to the waste management system applied in their area, the most effective method is the “door-to-door” approach. This method engages consumers directly, informing them about the applied waste collection system, recycling and composting initiatives, encouraging improved behavior regarding waste separation at source, compliance with rules and schedules, and providing information on the level of cleaning fees, the established billing system, and the obligation to pay such fees.

Residents and businesses shall be provided with informational leaflets addressing various aspects of the waste management system in their area, including service frequency, fee levels, billing systems, and the types of waste to be separated at source, depending on the collection scheme being implemented.

The use of technological means involved in waste collection and transport, as well as containers as communication tools: All vehicles and, where possible, waste containers should display clearly and legibly (with lettering of at least 10 cm in size) a meaningful slogan promoting cleanliness, along with the service provider’s contact number and a toll-free number designated by local authorities, in accordance with a pre-approved format.

Collection of Citizens’ Feedback

Another important aspect is the establishment of mechanisms for gathering citizens’ opinions and feedback. The question arises as to how the public can be encouraged to provide the municipality with comments, opinions, or feedback regarding waste management services.

The two main methods for obtaining community feedback are:

- **Complaint mechanisms:** The municipality or service operator shall maintain a contact/information office to receive complaints. The number of complaints and their resolution constitutes an important performance indicator for institutions in the field of waste management.
- **Demand assessment and “willingness to pay” surveys:** In order to assess demand, willingness, and capacity to pay, it is necessary to communicate with potential service beneficiaries regarding service alternatives, costs, budgets, and tariffs. For each community area included in the survey, the sample size should range between 100 and 200 respondents. This practice should be carried out periodically by the municipality, or whenever deemed necessary, in order to gather public opinion on service performance.

4. PLAN REVIEW

The implementation of the plan shall be monitored as a continuous process, accompanied by periodic evaluations (every five years) or more frequently, if necessary, in order to assess and

revise the defined objectives and measures. Monitoring and evaluation serve as a fundamental basis for the review of the plan.

Key issues to be considered during the analysis of this plan include the assessment of whether the objectives have been achieved and whether the implemented measures have been effective. The plan shall also be subject to review in cases where national waste management policies recommend or mandate substantial changes in waste management practices or establish new objectives in accordance with international obligations. In such cases, the plan may require significant amendments or the development of a new plan.

During the implementation phase, it is essential to continuously analyze the main factors influencing the projections and objectives of the plan, such as demographic developments, changes in consumption patterns, and the types of waste generated by industrial activities and households. The analysis of these factors also contributes to the evaluation of ongoing or planned programs and projects.

4.1 Plan Monitoring

The plan shall clearly define the subsequent steps, indicators, and instruments necessary to assess progress, verify the achievement of objectives, and report to decision-making authorities. The objective is to ensure that the responsible authorities are enabled to effectively track the development and implementation of the plan and to take additional measures where necessary.

The baseline study conducted for the purposes of this plan shall serve as the reference point against which the achievement of objectives and targets will be evaluated and against which changes in performance indicators will be measured.

Plan monitoring shall be a continuous process, accompanied by periodic evaluations and, where necessary, the revision of objectives and measures. This process aims to:

- Provide continuous information to stakeholders regarding the status of plan implementation;
- Analyze the current status and evaluate the effectiveness of implemented schemes;
- Adapt, improve, or strengthen existing programs and develop new, more effective initiatives;
- Update and disseminate relevant information and knowledge.

Monitoring and Evaluation Process of the Service

The municipality shall follow these steps in carrying out the monitoring and evaluation process of the plan:

Local Integrated Waste Management Plan of Roskovec Municipality

- Situation review: reassessment of objectives and targets in relation to the current context, including their evaluation through relevant indicators;
- Collection of quantitative and qualitative data related to waste management;
- Data analysis: measuring progress, comparing results with objectives, and verifying whether targets have been achieved within the defined timeframe;
- Documentation of conclusions;
- Sharing and discussion of findings with stakeholders, particularly with decision-makers.

The Mayor shall assign a working group or designated officials within the municipal administration with responsibility for monitoring and evaluating the plan.

The working group shall:

- Include representatives from waste management, financial administration, environmental and territorial control structures, as well as external experts;
- Identify and map all waste collection points (WCPs) within the municipal territory;
- Ensure the development of service monitoring systems, regardless of whether the service is provided by the municipality or private operators, in order to:
 - Measure the progress of each waste management operation against agreed objectives and targets;
 - Assess the effectiveness of equipment and human resources used;
 - Develop and implement corrective measures to improve service delivery;
 - Evaluate expenditures and control operational costs;
 - Assess user behavior and customer satisfaction levels;
 - Improve future planning and evaluate opportunities for service expansion and reorganization.

Furthermore, following the identification of waste collection points in the field, the working group may develop standardized templates for daily reports on their status across the municipal territory. These reports shall be completed by the respective supervisor prior to submission to the Directorate of Public Services within the municipality.

Local Integrated Waste Management Plan of Roskovec Municipality

Grumbullimi i mbetjeve dhe transport						Koha e shërbimit					
Raport ditor	Zona	Rajoni	Emri i superizorit			Data	Ora				
Emri i rrugës/fshati	Koha e monitorimit	PGM	Nr. i kontenierëve	Frekuenca e grumbullimit	Nr. i kontenierëve të grumbulluar	Data e larjes	Nr. i kontenierëve të larë apo jo	Nr. i kontenierëve të dëmtuar	Shënime		
1		1	2	2 ditë/javë							
		2	1								
		3	5								
		4	1								
		5	4								
		6	2								
		7	2								
		8	1								
2		9	2	2 ditë/javë							
		10	1								
		11	1								
		12	2								
		13	2								
		14	3								
3		15	2	2 ditë/javë							
		16	1								
		17	2								
		18	1								
4		19	1	2 ditë/javë							
		20	2								
		21	1								
		22	1								
		23	1								
		24	1								
		25	1								
		26	2								
5		27	1	2 ditë/javë							
		28	1								
		29	1								

Figura 22 Model të raportimi ditor për gjendjen e PGM

3. INSTITUTIONAL AND LEGAL FRAMEWORK

3.1 Local Regulation

The Municipality of Roskovec (hereinafter referred to as “the Municipality”) shall be required to prepare and adopt a local regulation governing the administration of waste management services. This regulation shall clearly define the roles and responsibilities of waste generators and waste operators, with the objective of ensuring the efficient and sustainable management of waste within the administrative territory of the Municipality.

The Regulation shall lay down the rules and procedures for local waste management, including procedures for the handling of citizens’ complaints, as well as a comprehensive framework of sanctions applicable in cases of non-compliance.

In particular, the Regulation shall include, inter alia:

- Local operational and service quality standards, including applicable methodologies and technologies, as well as occupational health and safety requirements for cleaning and waste management services;
- The rights and obligations of waste generators;

- c. Sanctions applicable in cases of damage to waste containers, or unauthorized alteration of the function or location of Waste Collection Points (WCPs) or containers;
- d. Preventive measures prohibiting the burning of waste in containers, the disposal of waste into water bodies and sewerage systems, or in locations other than those designated by the Municipality;
- e. Preventive measures prohibiting the disposal of bulky and hazardous waste, as well as the dumping of animal carcasses and other hazardous materials;
- f. Measures to prevent the parking of vehicles in front of or in the immediate vicinity of designated waste collection points;
- g. Obligations imposed on property owners to ensure the cleanliness of areas surrounding commercial premises and temporary sales points;
- h. Measures to ensure an acceptable level of public cleanliness, including the regular disinfection of waste containers and street bins;
- i. The obligation for sanitation personnel to wear appropriate uniforms during the performance of their duties;
- j. The definition of the rights and obligations of waste management operators (including waste operators and the waste management industry), including but not limited to:
 - The requirement that activities be carried out exclusively by licensed contractors;
 - Administrative procedures for the issuance, suspension, and revocation of licenses;
 - The obligation to pay fees and local taxes imposed by the competent authority;
 - The use of appropriate and compliant machinery and containers;
 - The use of duly licensed waste disposal facilities;
 - The registration of service users benefiting from municipal cleaning services;
 - The maintenance of historical records and data on waste management;
 - The prevention of risks to public health and safety.

3.2 Enforcement and Sanctions

The local regulation on waste management shall provide for a system of fines and sanctions, which shall be established and approved by the Municipal Council. The level of such fines and sanctions shall be determined in accordance with the level of service provided and the “polluter pays” principle, whereby any natural or legal person responsible for non-compliance shall be held liable for the costs associated with waste collection, cleaning, and environmental damage.

The system of sanctions shall aim to ensure proportionality, fairness, and effectiveness, while serving as a deterrent against environmental pollution and improper waste management practices.

Local fines shall be imposed by municipal inspectors operating under the jurisdiction of the Municipality. These inspectors shall be mandated to enforce compliance and to impose sanctions on natural and legal persons who fail to comply with legal and regulatory requirements related to the collection, removal, and transportation of waste.

3 ACTION PLAN

Component I: Legal Framework

1	Strategic objective	Detailed actions		Leading role and other partners	Time frames
1.1	Preparation and approval of the local legal and regulatory framework for waste management in accordance with national-level requirements.	1.1.0	Drafting and approval of the Local Urban Waste Management Plan	Roskovec Municipality; City Council	2022
		1.1.1	Drafting of the internal Regulation for the Integrated Waste Management System	Roskovec Municipality (Head of Services, Legal Department), external consultants; Municipal Council	2025-2026
		1.1.2	Drafting and approval of local sanctions/penalties for waste management issues	Roskovec Municipality (Head of Services, Legal Department, Financial Management Directorate), Municipal Council	2023-2024
		1.1.3	Development and implementation of communication and public awareness tools regarding the rules and penalties related to waste management aspects.	Roskovec Municipality (Head of Services), Volunteers, NGOs, community representatives	2023-2024
1.2	Prevention of pollution from the indiscriminate disposal of hazardous waste (including medical waste) and inert waste in compliance with Albanian legislation.	1.2.1	Informing the community on how to distinguish hazardous waste from municipal waste, as well as other obligations of waste producers.	Roskovec Municipality (Head of Services), Schools, Regional Environmental Agency (REA), Donors and NGOs	2022-2027
		1.2.2	Inspection and control of urban pollution from inert and construction materials, vehicle wrecks, etc., from generation and transport to their disposal.	Roskovec Municipality (Head of Services & Municipal inspectors)	2022-2027
		1.2.3	Construction and approval of an inert waste landfill in accordance with the recommendations of the Feasibility Study for the Fier Waste Zone.	Roskovec Municipality (Head of Services); Municipal Council	2022-2025

COMPONENT II: WASTE COLLECTION AND TRANSPORT AND STREET CLEANING

2	Strategic Objective	Detailed actions		Leading role and other partners:	Timeframes
2.1	Improvement of cleaning	2.1.1	Improvement and expansion of infrastructure for waste collection and transport across the entire territory of Roskovec Municipality.	Roskovec Municipality (Head of Services), Finance Office, GIZ	2024-2025

Local Integrated Waste Management Plan of Roskovec Municipality

services in the city of Roskovec Provision of efficient and high-quality services	2.1.2	Establishment of a source waste separation system, implemented in different pilot areas (according to the scheme proposed in this plan). Promotion of composting of agricultural waste from farms operating in the municipality	Roskovec Municipality (responsible of teh services), GIZ	2025-2027
	2.1.3	Establishment of pilot individual (at-source) collection schemes for large consumers.	Roskovec municipality (large businesses),	2025-2027
	2.1.4	Drafting effective agreements with large consumers (e.g. hotels, businesses) to clearly define the responsibilities and obligations of the parties in a differentiated service.	Roskovec Municipality(Head of Services, Large Businesses)	2025-2027
	2.1.5	Strengthening the capacity of municipal staff to be more effective in informing the community about the municipality's cleaning services, schedules, initiatives, service costs, and the relevant rules and penalties.	Roskovec Municipality (Head of Services, Community Information Office)	2025-2027

COMPONENT III: WASTE DISPOSAL AND TREATMENT

3	Objektiv i Strategjik		Veprimet e detajuara	Leading role and other partners	Timeframes
3.1	Establishment of a monitoring system and its strengthening to ensure that all waste collected in the territory of Roskovec Municipality is sent to the Energy Recovery Plant in Fier and not to illegal open dumping sites.	3.1.1	Establishment of a municipal monitoring system to prevent waste disposal at the former Marinzë dumping site	Roskovec Municipality, Public Services Sector	2024-2027
		3.1.2	Identification of illegal waste dumping sites that may arise in the municipality, and taking measures for their cleanup, followed by the application of sanctions in case of repeated offenses by the community or businesses	Roskovec Municipality, Public Services Sector	2025-2027
		3.1.3	Mapping of all waste collection points with 1.1 m ³ containers and defining the weekly schedule and daily routes to be followed by waste collection vehicles.	Roskovec Municipality, Public Services Sector	2024
		3.1.4	Equipping technological vehicles with GPS devices, which must be coordinated with the route that the vehicle must follow from the first waste collection point to the final destination at the Energy Recovery Plant in Fier.	Roskovec Municipality, Public Services Sector	2025-2027
		3.1.5	Establishment of a monitoring system for daily reporting via GPS on the routes taken by waste collection and transport vehicles to the final destination.	Roskovec Municipality, Public Services Sector	2024-2027
		3.1.6	Regular weekly and monthly reporting from the Energy Recovery Plant in Fier on the amount of waste regularly disposed of by Roskovec Municipality.	Roskovec Municipality, Public Services Sector	2025-2027

Local Integrated Waste Management Plan of Roskovec Municipality

COMPONENT IV: SOURCE SEPARATION AND OPERATION OF THE RECYCLING AND COMPOSTING RECOVERY CENTER

4	Strategic objective		Detailed actions	Lead role and other partners involved	Time tables
4.1	Promotion of waste separation and minimization at source and at all stages of waste generation by implementing appropriate pilot schemes; Progress towards national objectives for waste minimization at the local level.	4.1.1	Mobilization of community participation in pilot schemes, conducting preliminary surveys to assess willingness to participate before selecting the target areas.	Roskovec Municipality, NGOs, community, volunteers	2024-2027
		4.1.2	Drafting a specific work plan for the implementation of waste separation schemes, which must be coordinated with the existing system for the collection of other urban waste.	Roskovec Municipality (Head of Services, external experts)	2025-2027
		4.1.3	Creation and implementation of pilot schemes for household recycling and composting according to the pilot schemes recommended in this plan.	Roskovec Municipality, external experts & consultants; recycling businesses; community.	2026-2027
		4.1.4	Organization of community meetings and meetings with businesses, before and during the launch of pilot schemes, to support awareness-raising and education efforts/programs aimed at improving the quality and level of community participation	Roskovec Municipality, external experts & consultants; recycling businesses; community.	2025-2027
		4.1.5	Organization of meetings with stakeholder groups in the region and beyond. Promotion of recycling facilities as well as separate collection schemes and composting schemes.	Roskovec Municipality, external experts & consultants; recycling businesses; Association of Municipalities.	2024-2027
		4.1.6	Monitoring the implementation of waste separation, recycling, and composting schemes: both the effectiveness and quality of their operation, as well as the quantity of waste that is separated and processed; maintaining a weekly record of these data and reporting monthly to the supervisory group at the municipality	Roskovec Municipality, external experts & consultants; recycling businesses	2022-2027
		4.1.7	Establishing cooperation/participation agreements with large businesses and, where possible, with the community in pilot schemes, defining the obligations and benefits of the parties involved.	Roskovec Municipality, experts, large city businesses, pilot scheme consumers.	2026-2027
		4.1.8	Conducting feasibility studies and economic analyses on the local development of composting at local or inter-municipal level	Roskovec Municipality, external experts & consultants	2026-2027
4.2	Incentivizing and supporting the private sector in recycling and composting activities.	4.2.1	Encouraging the expansion of household recycling and composting schemes through co-financing with recycling businesses and the community	Roskovec Municipality, external experts & consultants; recycling businesses in the region	2025-2027
		4.2.2	Promoting and developing local markets for recyclable materials.	Roskovec Municipality, external experts; recycling businesses in the region.	2025-2027

Local Integrated Waste Management Plan of Roskovec Municipality

COMPONENT V: FINANCIAL ASPECTS

5	Strategic objective		Detailed actions.	Lead role and other partners involved.	Time tables
5.1	Strengthening the financial framework for waste management, agreements, and contracts; establishing an improved financial system (related to the budget and required investments)	5.1.1	Annual application of the 'Full Cost and Tariff Calculation' methodology approved by Council of Ministers Decision No. 319/2018.	Roskovec Municipality (Head of Services and Finance Office)	2025-2027
		5.1.2	Updating the customer database, aiming to increase the number of fee payers toward full coverage.	Roskovec Municipality (Statistics Office, Tax Office)	2025-2027
		5.1.3	Application of clear and effective penalties, and enforcement procedures for non-payment of waste fees.	Roskovec Municipality (Services Office, Municipal Police)	2025-2027
		5.1.4	Establishing incentives for waste minimization, recycling, and composting: applying reductions in cleaning fees for consumers participating in pilot waste minimization programs.	Roskovec Municipality (Services Office, Finance Office, Information Office)	2025-2027
		5.1.5	Reviewing and improving business tariffing in full compliance with the 'polluter pays' principle and the provisions set out in this plan.	Roskovec Municipality (Services Office, Finance and Tax Office)	2025-2027
		5.1.6	Conducting periodic (annual) studies on citizens' 'willingness to pay' and 'ability to pay'.	Roskovec Municipality (Services Office, Information Office)	2025-2027
		5.1.7	Reviewing the cost recovery strategy and tariff levels based on the analysis developed in the plan, taking into account collection performance, willingness-to-pay studies, costs, and objectives	Roskovec Municipality (Services Office, Finance and Tax Office).	2025-2027
		5.1.8	Transparency and communication: The tariff-setting process must be transparent and properly communicated to all stakeholders, using mass communication methods as well as door-to-door outreach.	Roskovec Municipality (Services Office, Finance Office, Tax Office, Municipal Council)	2025-2027

KOMPONENTI VI: NDËRGJEGJËSIMI PUBLIK DHE EDUKIMI

6	Strategic Objective		Detailed actions.	Lead role and other partners involved.	Time Tables
6.1	Informing and raising awareness among the community and businesses to participate in municipal initiatives for keeping the	6.1.1	Developing a local strategy for periodic information and communication on the waste management system implemented by the municipality.	Roskovec Municipality (Services Office, Information Office, Municipal Council).	2024-2027
		6.1.2	Preparation and continuous distribution of specific information for the community and businesses regarding the waste	Roskovec Municipality (Services Office, Information Office).	2024-2027

Local Integrated Waste Management Plan of Roskovec Municipality

city clean, as well as for implementing innovative waste minimization schemes, such as source separation of recyclable waste from city businesses and composting of agricultural waste from farms in the municipality		management system implemented by the municipality. Distribution of information brochures, bulletins, posters, and posts on social media and the municipal website.		
	6.1.3	Continuous information of stakeholder groups that are part of pilot schemes for source separation of recyclable and organic waste.	Roskovec Municipality (Services Office, Information Office)	2024-2027
	6.1.4	Creating community groups to promote education and awareness in pilot areas and among pilot users by distributing information packages specifically on source separation of waste and its composting.	Roskovec Municipality (Services Office, Information Office)	2024-2027
	6.1.5	Use of technological tools and containers to provide general information (slogans, contact numbers, service schedules)	Roskovec Municipality (Services Office, Information Office)	2024-2027
	6.1.6	Implementation of a door-to-door campaign to efficiently engage the population and businesses in recycling activities and source separation.	Roskovec Municipality (Services Office, Information Office)	2024-2027
	6.1.7	Development of ongoing recycling programs and campaigns to improve the quality of source separation through recycling initiatives.	Roskovec Municipality (Services Office, Information Office)	2024-2027
	6.1.8	Development and distribution of guides and illustrations on recycling and composting for schools, businesses, and residents.	Roskovec Municipality (Services Office, Information Office)	2024-2027



REPUBLIKA E SHQIPËRISË
ROSKOVEC MUNICIPALITY
MUNICIPAL COUNCIL

No. 7238 prot.

Roskovec, on 28.08 2025

DECISION

No. 48, date 28.08 2025

**ON
THE APPROVAL OF THE LOCAL WASTE MANAGEMENT PLAN
FOR THE MUNICIPALITY OF ROSKOVEC**

Based on Law No. 139/2015, dated 17.12.2015, "On Local Self-Government", as amended, Article 22, point 1 and point 4, and Article 54, letter "k"; Law No. 10463, dated 22.09.2011, "On Integrated Waste Management", Article 12; Decision No. 1, dated 13.01.2022 of the National Territorial Council, "On the Approval of the National Plan for Solid Waste Management"; Law No. 91/2013, "On Strategic Environmental Assessment"; Council of Ministers Decision No. 507, dated 10.06.2015, "On the Approval of the Detailed List of Plans or Programs with Significant Negative Impacts on the Environment that shall be subject to the Strategic Environmental Assessment Process"; Law No. 10431, dated 09.06.2011, "On Environmental Protection"; Law No. 107, dated 31.07.2014, "On Territorial Planning and Development"; Order of the Mayor No. 60, with Prot. No. 1732, dated 04.03.2025; the "Environmental Declaration for Strategic Environmental Assessment" of the Ministry of Tourism and Environment, with Prot. No. 6129/1, dated 22.08.2025, The Municipal Council,

DECIDED

- 1) The approval of the Local Waste Management Plan for the Municipality of Roskovec, in accordance with the attached document.
- 2) The Public Services Enterprise, the Directorate of Territorial Management, and the Sector for Greenery and Organic Plant Waste Composting are hereby charged with the implementation of this decision.
- 3) This Decision shall enter into force 10 (ten) days following its publication.

(Përkthyer nga origjinali: Enerida Kugo)

CHAIR OF THE COUNCIL

A. Plaka